

<b>Protective Marking:</b>	<b>Publication (Y/N):</b>
<b>Title:</b> Item on street drug dealing and tackling related ASB	
<b>Department:</b> LBH Community Safety, Enforcement and Business Regulation – Intel Hub	
<b>Date created:</b>	<b>Version:</b> 1

### **Street Based Drug Markets and Substance Misuse**

The rationale for the CSP adopting this as a strategic priority is outlined in the Partnership Plan published online (see pages 27 to 30), and a condensed version of the action plan is included with this. Some aspects of the plan are cross referenced to and delivered through boards, but are nonetheless relevant to this agenda. These have been referenced within the plan to enable more effective and joined up services.

The plan is sub divided under the following headings:

1. On Street and Estate Supply and Dealing
2. On Street and Estate Drug related ASB (including street users) and drug paraphernalia
3. Night Time Economy
4. Gangs, County Lines and Local Drug Markets
5. Repeat Offenders and Offender Management
6. Drug / Substance Treatment and Support
7. Youth Work
8. Analysis and Intelligence Requirement

#### **On Street and Estate**

The first two sub headings are virtually identical in terms of delivery. The first one relates specifically to dealing and supply of drugs, whilst the second relates to the subsidiary crime and ASB that is often associated with drug markets.

Every week data are obtained from Police and Council databases concerning all drug related activity that has been reported through official channels (Police 101, recorded crime, LBH ASB records including those reported to housing, and CCTV records). Incidents are mapped, hotspots are identified and relevant / specific tasks are actioned through partnership tasking arrangements and shared where necessary for intelligence purposes.

The main recipients are the SNT, (Safer Neighbourhood Teams), Police Partnerships and Local Intelligence Teams for proactive and routine patrols of problem places, and development of further

intelligence. Vehicle details are shared with CCTV and put onto the ANPR register for a period of three months. This list is updated weekly. The same information is also coordinated through LBH weekly enforcement meetings to ensure that LBH Enforcement Officers, and CCTV are providing a visible presence, addressing associated ASB, and gathering further relevant information to better understand the situational context of the problems identified. Sometimes an area is patrolled for a short period of time, arrests are made or perpetrators are managed using various options under the ASB Crime and Policing Act 2014. Enforcement is not the only option available under this legislation, and positive conditions can be applied to civil injunctions to ensure compliance with drug treatment and other orders; in the first instance those perpetrators identified as having drug / substance misuse needs are offered support (including housing) to assist their recovery and help address negative behaviours. In the last year a number of drug related issues have been subject to this process. Community Safety Enforcement and Business Regulation Service (CSEBR) also have an agreement with Hackney Housing to prioritise (evidence based) housing estates that have been identified as problematic.

By way of a recent example, a vehicle flagged as having drug connections was spotted by local officers. They were able to make further enquiries and have identified an address and persons concerned with the supply of drugs.

Persistent and ongoing issues are escalated to the monthly Partnership Tasking meeting which brings together representatives from LBH, the Police, youth workers, youth outreach workers (and contextual safeguarding), public health (substance misuse operational group SPOC), parking, housing, drug and substance misuse outreach workers, and regeneration / planning officers. There is a core group of members for this group, but other parties are invited where expertise is required to address a specific problem. These meetings are monthly, and the main focus is on longer term problem solving. Crime prevention through environmental design also forms part of the longer term solution. There are currently a number of drug specific locations that this group are seeking to address. All actions are subject to an action plan, and success is measured by way of an evaluation of the effectiveness that tactics and initiatives have had on reducing the problem either by way of reduced complaints, or observations from officers / residents that the situation has improved.

Everything described above is dependent upon people reporting issues to the Council or Police using official channels. It is recognised that there are a number of gaps surrounding how people can report drug related problems, and sometimes people wish to remain anonymous. It is believed

that under-reporting of incidents is significant. However if issues are reported, they will inform the weekly and ongoing analysis (and tasking), assist us in providing a more accurate picture of drug related problems, and ensure that our resource are placed where they are most required.

All of the processes described above (and also with the Police below) have continued weekly / monthly throughout the COVID19 pandemic. At the beginning of the pandemic, the Police requested information from partners about what impact it was having on drug markets and substance misuse. A request was sent to various partners including public health and youth substance misuse workers for any information about changes to patterns in drug misuse, and cost. Feedback was provided by some outreach teams and youth workers that proved informative, and overall drug markets in Hackney appear to have been relatively unaffected by the pandemic.

The Police have prioritised drug related violence, and drugs that underpin ASB. Operation Continuum has been established as a partnership approach to tackling drug issues. The first operation has been delivered (20+ arrests were made in the Manor House area), and more of these are to follow. Police will also make use of intelligence led stop and search, search warrants and vehicle borne dealing. Central East command unit have also just created a new Drug Advisor position to improve the investigation of drug trafficking and maximise outcomes.

### **Nigh Time Economy (NTE)**

The NTE is a strategic priority in its own right, however drug misuse and dealing is a significant issue at NTE locations; particularly legal highs (including nitrous oxide), and cocaine. Specific focus has been placed on nitrous oxide use and associated ASB. LBH Enforcement Officers together with the Police have targeted some of the busiest places and issued FPNs for street trading and littering, where people have been observed causing ASB associated with this behaviour. This has formed a key part of partnership activity in the NTE, mostly under Operation Lagana (a Police initiative) funded by the Late Night Levy. Lagana patrols have also involved Police and Council licensing teams, Police TSG (Territorial Support Group), Safer Neighbourhoods, Police NTF (Neighbourhood Task Force), and the Police NID (Neighbourhood Improvement District). In the period up to Christmas this work led to a large rise in arrests for drug possession and supply recorded by the Police in Shoreditch which was considered a positive outcome.

The Police have recently established the Neighbourhood Improvement District as a pilot in Shoreditch. A small team of officers (led by an Inspector) are working closely together with LBH

and LBTH to take a longer term problem solving approach to cross border and legacy issues in Shoreditch. The Strategic objectives are in line with MPS, local Police (BCU) and partnership priorities, and aim to put more focus on prevention, engagement and enforcement. This project isn't just focusing on crime; there are also links to environmental and planning objectives, particularly around the AAP for Shoreditch. Prior to COVID19 analysis and research were underway. The NID team are still working on development of plans, and some background work is ongoing and will resume in full once the NTE starts to pick up again.

The NTE has been severely disrupted by the COVID19 pandemic, and there is currently no NTE activity at all. This is being monitored at weekly and partnership tasking meetings.

### **Gangs, County Lines and Local Drug Markets**

This sub category is delivered through the IGU action plan, and will also be linked to Operation Continuum (Police – see above).

### **Repeat Offenders and Offender Management**

This part of the plan is still under some development, particularly since there has been a period of transition with CRC and the Probation Service, but most of it will be delivered through local mechanisms (e.g. Integrated Offender Management).

### **Drug / Substance Treatment and Support**

This section of the plan will be delivered by Public Health, and is aligned to their service plans and cross referenced to the Substance Misuse Operational Group (SMOG). It should be noted that Public Health have recently recommissioned services, which will be delivered by a new service provider from October, so this aspect of the plan will most likely be subject to review and revision.

### **Youth Work**

The Actions for this segment have been extracted from the Youth Justice plan, with a focus on awareness, risk, vulnerability and harm reduction. This is delivered through the Safer Young Hackney Board.

### **Analysis and Intelligence Requirement**

Part of the purpose of the strategic assessment is to identify intelligence gaps and the necessary steps to fill those gaps. These are outlined in the analysis and as part of the plan. The analysis

cycle is ongoing. The weekly, monthly and quarterly reports, information, data and evidence being gathered all support this ongoing cycle. As previously stated it is considered that there are significant gaps in reporting and information on the subject of drugs. Police data tends to record Police proactive and enforcement activity, which makes it difficult to fully understand the scope and breadth of drug markets in the borough, and it doesn't always highlight the full range and extent of the problems being experienced in communities. The resident survey undertaken for the strategic assessment highlighted street based drug activity as one of the most important issues of concern to residents in Hackney.

### **Performance Indicators**

As explained above, much of the activity that forms part of this plan will be measured in terms of evaluation of specific initiatives and operations. The Key Performance Indicators listed on the plan, should provide a general synopsis of drug related activity (including arrests, convictions and other sanctions). We are not in a position to fully report on all of these, and some have proven more challenging than initially thought; % of offenders who re-offend after community / prison service, and IOM indicators, so these will need to be reviewed.

The following graphs show: total drugs offence data; drug trafficking data; and finally, possession data.

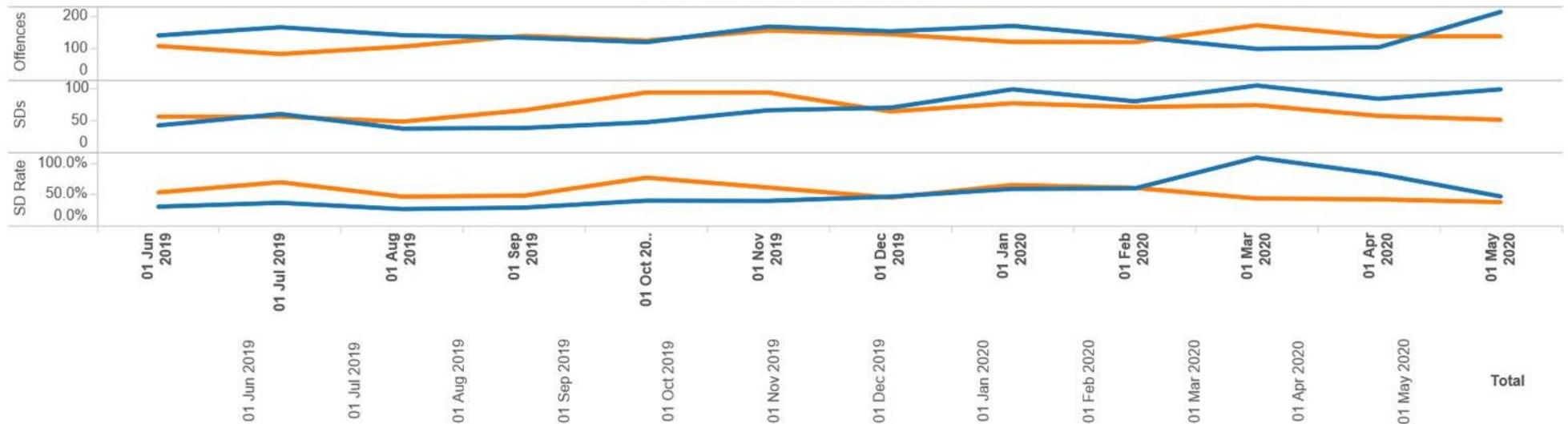
Each graph shows offences at the top, detections in the middle and detection rate at the bottom:

## Total drugs

Up marginally on last year. You will note the uptick in numbers in recent months – a product of improved tasking and some Pan London support.

Reporting Period Ending: 8 June 2020

### Monthly Offences & SDs



	01 Jun 2019	01 Jul 2019	01 Aug 2019	01 Sep 2019	01 Oct 2019	01 Nov 2019	01 Dec 2019	01 Jan 2020	01 Feb 2020	01 Mar 2020	01 Apr 2020	01 May 2020	Total
Offences Previous Year	106	81	104	138	123	155	143	119	118	171	136	136	1,530
Offences Current Year	139	165	140	132	118	167	152	169	135	97	102	213	1,729
Difference in Offences	33	84	36	-6	-5	12	9	50	17	-74	-34	77	199
% Difference in Offences	31%	104%	35%	-4%	-4%	8%	6%	42%	14%	-43%	-25%	57%	13%
SDs Previous Year	56	56	48	66	94	94	64	77	71	74	57	51	808
SDs Current Year	42	60	37	38	47	66	70	99	80	105	84	99	827
Difference In SDs	-14	4	-11	-28	-47	-28	6	22	9	31	27	48	19
% Difference in SDs	-25%	7%	-23%	-42%	-50%	-30%	9%	29%	13%	42%	47%	94%	2%
SD Rate Previous Year	52.8%	69.1%	46.2%	47.8%	76.4%	60.6%	44.8%	64.7%	60.2%	43.3%	41.9%	37.5%	52.8%
SD Rate Current Year	30.2%	36.4%	26.4%	28.8%	39.8%	39.5%	46.1%	58.6%	59.3%	108.2%	82.4%	46.5%	47.8%

Document Number: 22634576

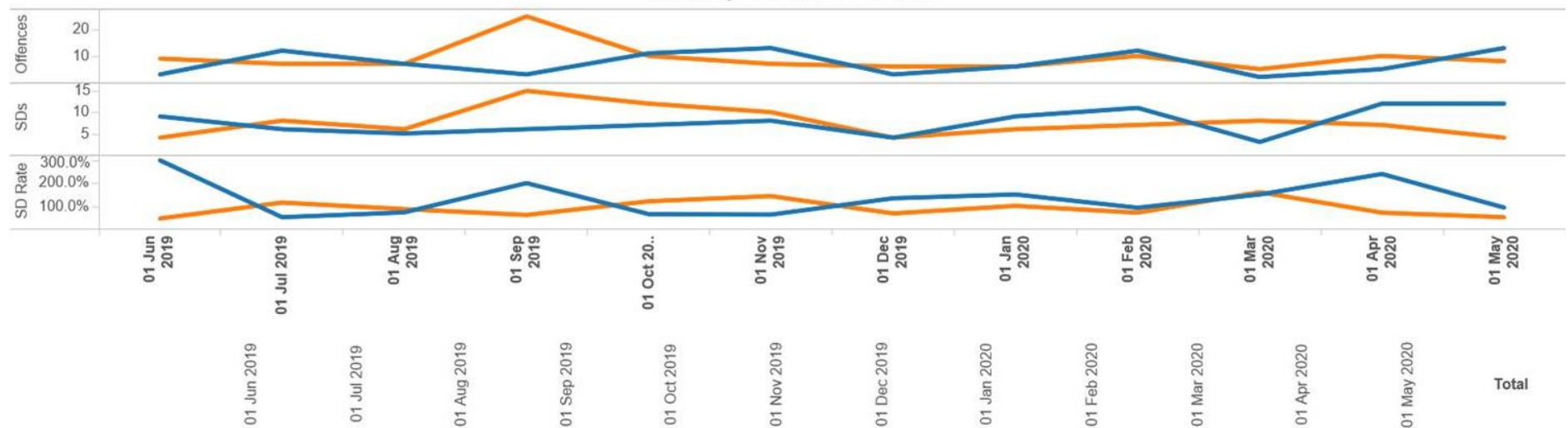
Document Name: CSP\_Drugs\_Scrutiny\_10062020

Drug trafficking – PWITS/Concerned in the supply etc

Again, increases over the past 4 months. 10 detections already this month. The supply charges are for heroin/crack cocaine and cannabis. Notable operations include the inaugural Continuum operation targeting dealers in manor House 20+ arrested and charged.

Reporting Period Ending: 8 June 2020

### Monthly Offences & SDs



	01 Jun 2019	01 Jul 2019	01 Aug 2019	01 Sep 2019	01 Oct 2019	01 Nov 2019	01 Dec 2019	01 Jan 2020	01 Feb 2020	01 Mar 2020	01 Apr 2020	01 May 2020	Total
Offences Previous Year	9	7	7	25	10	7	6	6	10	5	10	8	110
Offences Current Year	3	12	7	3	11	13	3	6	12	2	5	13	90
Difference in Offences	-6	5	0	-22	1	6	-3	0	2	-3	-5	5	-20
% Difference in Offences	-67%	71%	0%	-88%	10%	86%	-50%	0%	20%	-60%	-50%	63%	-18%
SDs Previous Year	4	8	6	15	12	10	4	6	7	8	7	4	91
SDs Current Year	9	6	5	6	7	8	4	9	11	3	12	12	92
Difference in SDs	5	-2	-1	-9	-5	-2	-	3	4	-5	5	8	1
% Difference in SDs	125%	-25%	-17%	-60%	-42%	-20%	-	50%	57%	-63%	71%	200%	1%
SD Rate Previous Year	44.4%	114.3%	85.7%	60.0%	120.0%	142.9%	66.7%	100.0%	70.0%	160.0%	70.0%	50.0%	82.7%
SD Rate Current Year	300.0%	50.0%	71.4%	200.0%	63.6%	61.5%	133.3%	150.0%	91.7%	150.0%	240.0%	92.3%	102.2%

Document Number: 22634576

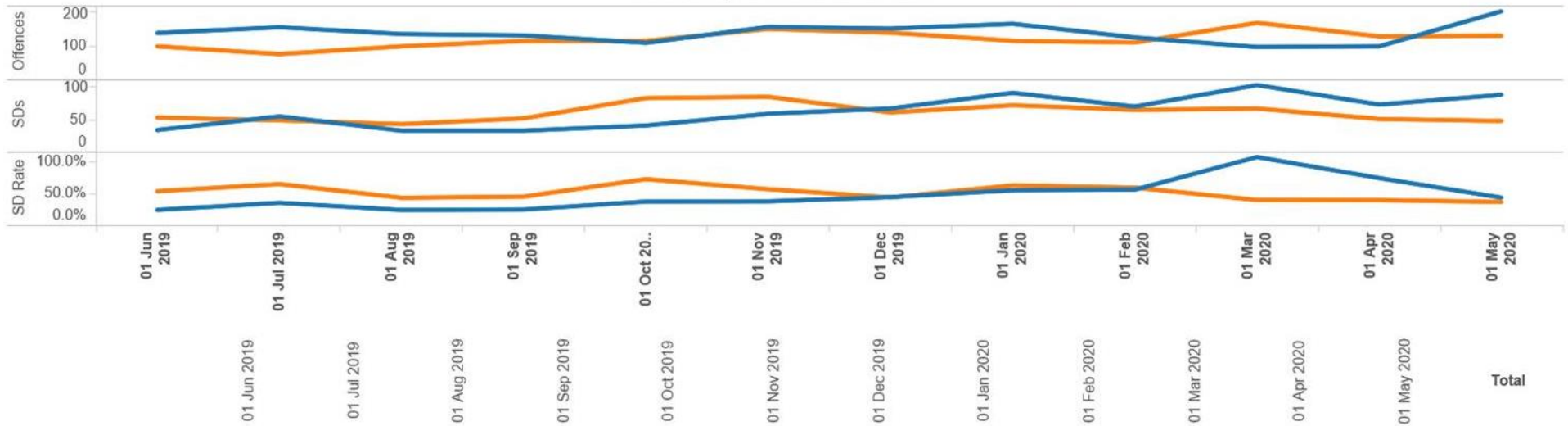
Document Name: CSP\_Drugs\_Scrutiny\_10062020

## Drugs possession

Reflects increased stop and search activity.

Reporting Period Ending: 8 June 2020

### Monthly Offences & SDs



	01 Jun 2019	01 Jul 2019	01 Aug 2019	01 Sep 2019	01 Oct 2019	01 Nov 2019	01 Dec 2019	01 Jan 2020	01 Feb 2020	01 Mar 2020	01 Apr 2020	01 May 2020	Total
Offences Previous Year	97	74	97	113	113	148	137	113	108	166	126	128	1,420
Offences Current Year	136	153	133	129	107	154	149	163	123	95	97	200	1,639
Difference in Offences	39	79	36	16	-6	6	12	50	15	-71	-29	72	219
% Difference in Offences	40%	107%	37%	14%	-5%	4%	9%	44%	14%	-43%	-23%	56%	15%
SDs Previous Year	52	48	42	51	82	84	60	71	64	66	50	47	717
SDs Current Year	33	54	32	32	40	58	66	90	69	102	72	87	735
Difference In SDs	-19	6	-10	-19	-42	-26	6	19	5	36	22	40	18
% Difference In SDs	-37%	13%	-24%	-37%	-51%	-31%	10%	27%	8%	55%	44%	85%	3%
SD Rate Previous Year	53.6%	64.9%	43.3%	45.1%	72.6%	56.8%	43.8%	62.8%	59.3%	39.8%	39.7%	36.7%	50.5%
SD Rate Current Year	24.3%	35.3%	24.1%	24.8%	37.4%	37.7%	44.3%	55.2%	56.1%	107.4%	74.2%	43.5%	44.8%

Document Number: 22634576

Document Name: CSP\_Drugs\_Scrutiny\_10062020