

Do not scale from this drawing.
 If in doubt, ask.
 This drawing is the property of Ica and must
 not be copied, reproduced or disclosed
 without written permission.

revisions:

MATERIALS:

- 1. FACING BRICK
 Istock sandfaced
 'Fulton Old Chelsea Yellow'
 with grey mortar throughout.
- 2. NATURAL POLISHED
 GRANITE
- 3. NATURAL POLISHED
 GRANITE
- 4. WINDOWS/DOORS
 Aluminum windows and doors
 PPC'd finish RAL 7046
- 5. CURTAIN WALLING
 Kawneer 1202 series or similar
 PPC'd finish RAL 7046
 Solar Control glazing to
 South & East facades
- 6. LOOK-ALIKE GLAZING
 Ceramalite look-alike glazing
- 7. BALUSTRADING
 Galvanised mild steel
- 8. METAL CLADDING.
 VM Zinc (pre-patinated
 'quartz' finish with standing
 seams)
- 9. PLANT CLADDING
 As above
- 10. FIRE GLASS BLOCKS
 La Rochere TF60.200mm sq.
 by 150mm thick glass blocks
 by Glass Block Technology or
 similar and approved.

Revision A pnc 23.02.09
 Top Floor set back in line with Urban Design
 comments. Fenestration amended. Plinth
 added. Stair riser amended. Brickwork
 amended. Corner amended.

Revision B sr 06.06.09
 Elevations revised in response to planners
 comments



Ica Architects
 2 Orkney Court, Peel Park, East Kilbride, G74 9PH
 Tel: +44 (0)1355 578 070 Fax: +44 (0)1355 574 992
 www.icaarchitects.com

Ica Architects Ltd
 registered in Scotland company no 2617727

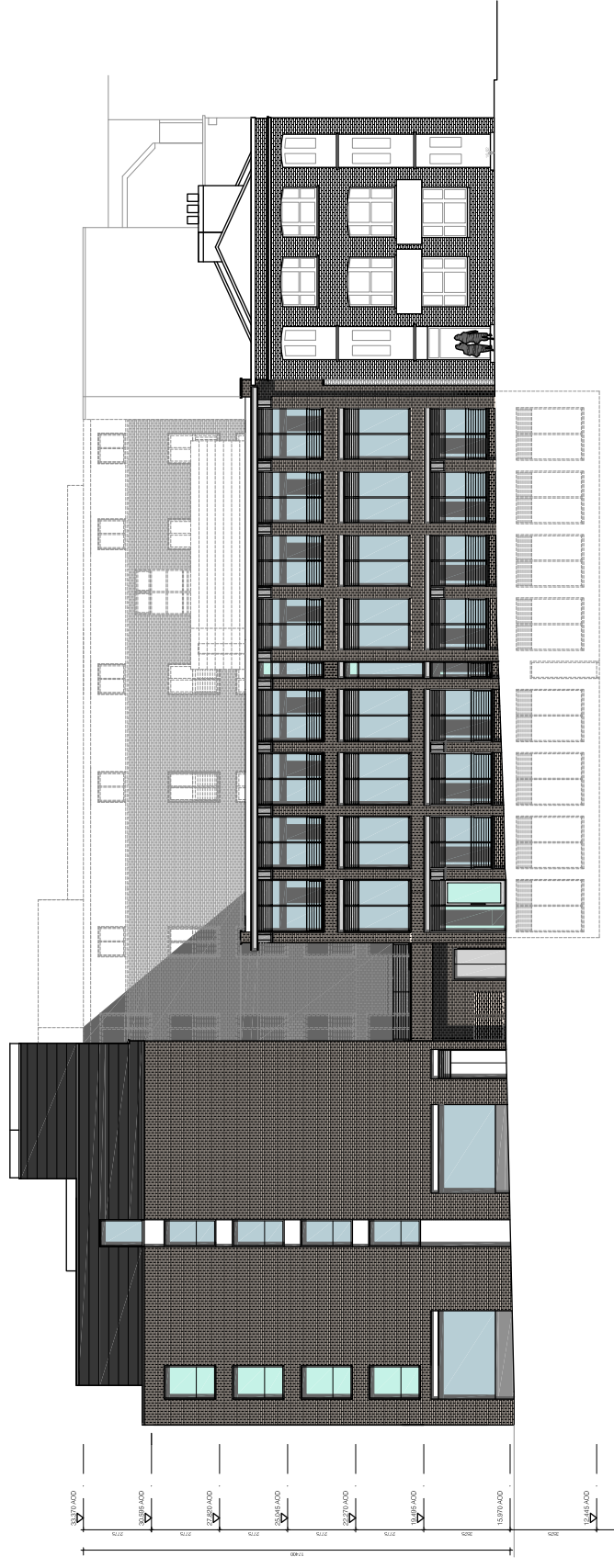
project title:
 Curraigh Road, Shorecliff
 Staybridge Suites Hotel
 & Offices

drawing title:
 Proposed Elevations
 Hotel and Office

issue stage:
 Planning

date:
 Nov.07
 drawn:
 pnc
 scale @ A3:
 1:200

drawing number:
 100/PL501
 revision:
 B



North Elevation



Office South Elevation

Office East Elevation