

Do not scale from this drawing.
If in doubt, ask.
This drawing is the property of Ica and must not be copied, reproduced or disclosed without written permission.

revisions:

MATERIALS:

- 1. **FACING BRICK**
Ibstock sandiaced 'Fulton Old Chelsea Yellow' with grey mortar throughout.
- 2. **NATURAL POLISHED GRANITE**
- 3. **NATURAL POLISHED GRANITE**
- 4. **WINDOWS/DOORS**
Aluminum windows and doors PPC'd finish RAL 7046
- 5. **CURTAIN WALLING**
Kawneer 1202 series or similar PPC'd finish RAL 7046
Solar Control glazing to South & East facades
- 6. **LOOK-ALIKE GLAZING**
Cermetite look-alike glazing
- 7. **BALUSTRADING**
Galvanised mild steel
- 8. **METAL CLADDING**
VM Zinc (pre-patinated 'quartz' finish with standing seams)
- 9. **PLANT CLADDING**
As above
- 10. **FIRE GLASS BLOCKS**
La Rochere, 1F60, 200mm sq. by 150mm thick glass blocks by Glass Block technology or similar and approved.

Revision A 23.02.09
Top Floor set back in line with Urban Design Committee Presentation amended. Plinth and Balustrade set back in line with Urban Design Committee Presentation amended. Corner amended.

Revision B 06.05.09
Elevations revised in response to planners comments



Ica Architects
2nd Floor, Post Box, East Kilbride, G74 6PH
Tel ++(0)1355 578 070 Fax ++(0)1355 574 992
www.icaarchitects.com

Ica Architects Ltd
registered in Scotland company no 287727

project title:
Curran Road, Shorecliff
Staybridge Suites Hotel
& Offices

drawing title:
Proposed Elevations
South and East Elevation

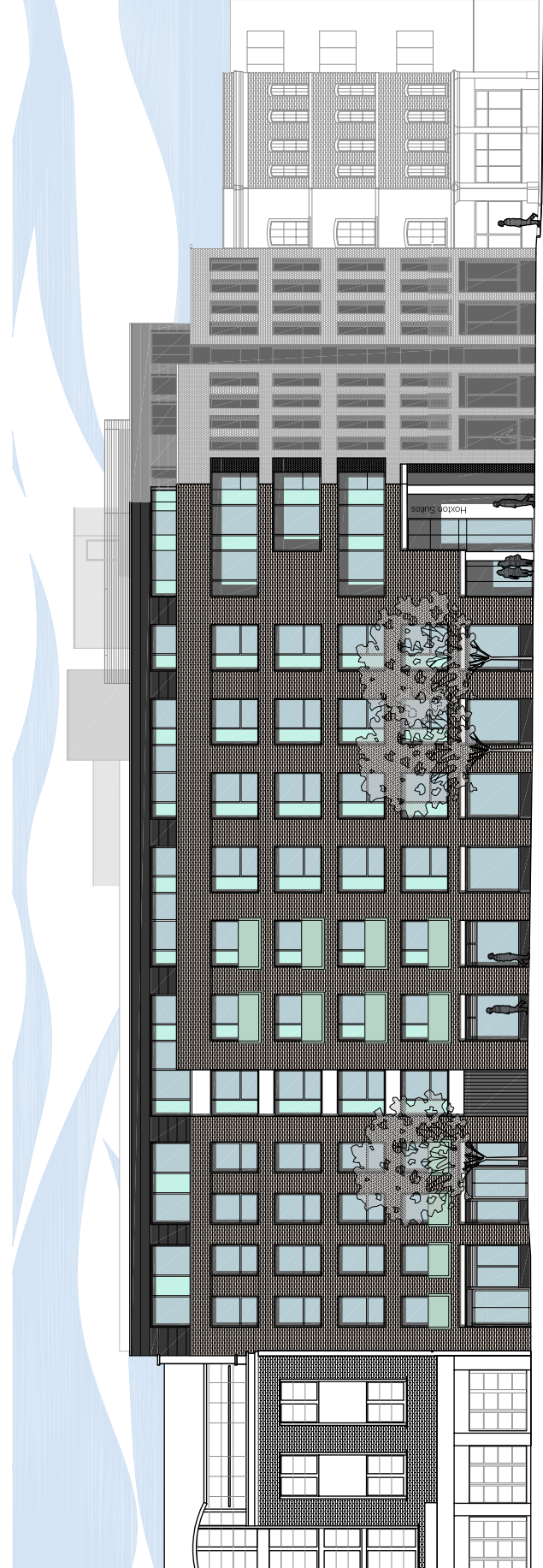
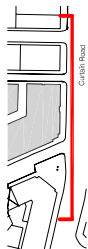
issue stage:
Planning

date: Nov 07
drawn: pmc
scale @ A3: 1:200

drawing number:
100/PL500
revision:
B



East Elevation



South Elevation

