

Do not scale from this drawing.
If in doubt, ask
this drawing is the property of Ica and must
not be copied, reproduced or disposed
without written permission.

revisions:

- 20. Accessible Suite
- 21. Bedroom
- 22. Studio

Schedule of Accommodation:

- Studio: 53.
- 1 Bed: 23.
- Accessible Studio: 5.
- Total Suites: 81.

Site area: 0.34 acre

Revision A p/mc 23.02.09
First floor fenestration amended in line with
overall revised planning elevations & Lightwell
amended

Revision B p/mc 3.06.09
Window openings & entrance position
amended in line with overall revised planning
elevation & entrance to planners comments.
Door swing amended.



Ica Architects
2 O'Hall Court, Peel Park, East Kilbride, G74, 5PH
Tel +44 (0)1355 578 070 Fax +44 (0)1355 574 992
www.icaarchitects.com

Ica Architects Ltd
registered in Scotland company no 287727

Project title:
Curtain Road, Shorelitch
Straybridge Suites Hotel
& Offices

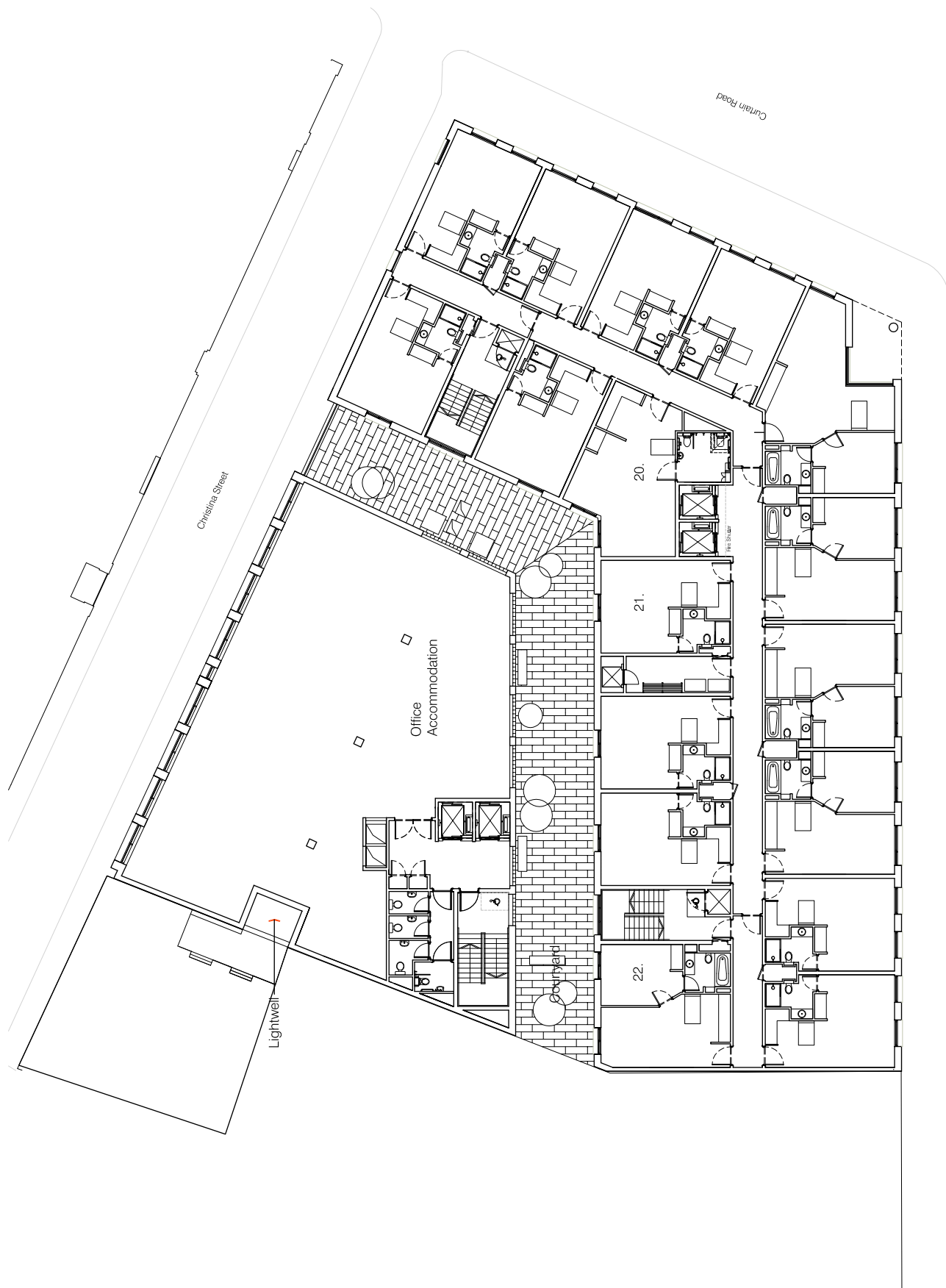
drawing title:
First Floor Plan

Issue stage:
Planning

date: Feb 08
drawn: p/mc
scale @ A3: 1:200

drawing number:
100/PL303

revision:
B



Scrutton Street



1/6