

Do not scale from this drawing.  
If in doubt, ask  
this drawing is the property of Ica and must  
not be reproduced or disposed  
without written permission.

revisions:

- 0. Cycle storage (17)
- 1. Staff
- 2. Beer Store
- 3. Linen
- 4. Dry Goods
- 5. Freezer
- 6. Chiller
- 7. Kitchen
- 8. Holding Area
- 9. Locker Room
- 10. Communication
- 11. Retail
- 12. Admin
- 13. General Manager
- 14. Luggage Store
- 15. Laundry (12m<sup>2</sup>)
- 16. Gym (29m<sup>2</sup>)
- 17. Den
- 18. Living
- 19. Hub/Dining

Schedule of Accommodation:  
Studio: 53.  
1 Bed: 23.  
Accessible Studio: 5.  
Total Suites: 81.

Site area: 0.34 acre

**Revision A** pnc 23.02.09  
Ground Floor fenestration amended in line with  
overall revised planning elevations

**Revision B** pnc 3.06.09  
Ground Floor columns, openings & entrance  
position amended in line with overall revised  
planning elevations in response to planners  
comments. Door swings amended and  
dropped kerbs added.



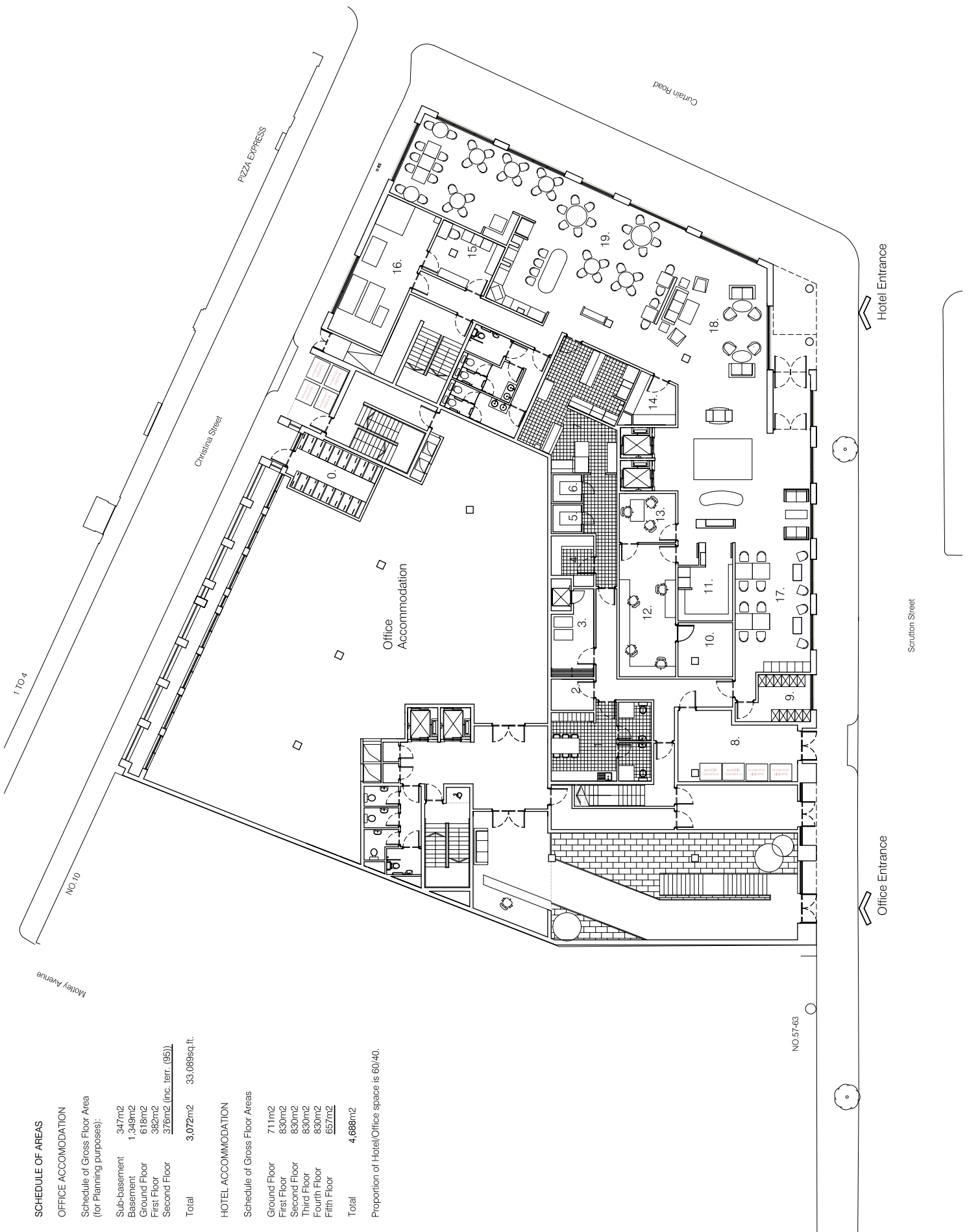
**Ica Architects**  
2 Orkney Court, Peel Park, East Kilbride, G74 5PH  
Tel: +44 (0)1355 576 070 Fax: +44 (0)1355 574 992  
www.icaarchitects.com  
Ica Architects Ltd  
registered in Scotland company no 267727

project title:  
Curran Road, Shoreditch  
Staybridge Suites Hotel  
& Offices

drawing title:  
Ground Floor Plan

issue stage:  
Planning  
date: Feb 08  
drawn: pnc  
scale @ A3:  
1:200

drawing number:  
100/PL302  
revision:  
B



SCHEDULE OF AREAS

OFFICE ACCOMMODATION

Schedule of Gross Floor Area  
(for Planning purposes):

Sub-basement	347m <sup>2</sup>
Basement	1,349m <sup>2</sup>
Ground Floor	618m <sup>2</sup>
First Floor	382m <sup>2</sup>
Second Floor	376m <sup>2</sup> (inc. terr. (95))
<b>Total</b>	<b>3,072m<sup>2</sup></b>

33,068sq.ft.

HOTEL ACCOMMODATION

Schedule of Gross Floor Areas

Ground Floor	711m <sup>2</sup>
First Floor	830m <sup>2</sup>
Second Floor	830m <sup>2</sup>
Third Floor	830m <sup>2</sup>
Fourth Floor	830m <sup>2</sup>
Fifth Floor	657m <sup>2</sup>
<b>Total</b>	<b>4,688m<sup>2</sup></b>

Proportion of Hotel/Office space is 60/40.