

**General Notes**

1. Copying is Strictly Prohibited. All Rights Reserved.
2. All dimensions are in millimeters, unless otherwise stated.
3. All dimensions are to the centerline of the work, unless otherwise stated.
4. All dimensions are to the centerline of the work, unless otherwise stated.
5. All dimensions are to the centerline of the work, unless otherwise stated.
6. All dimensions are to the centerline of the work, unless otherwise stated.
7. All dimensions are to the centerline of the work, unless otherwise stated.
8. All dimensions are to the centerline of the work, unless otherwise stated.
9. All dimensions are to the centerline of the work, unless otherwise stated.
10. All dimensions are to the centerline of the work, unless otherwise stated.

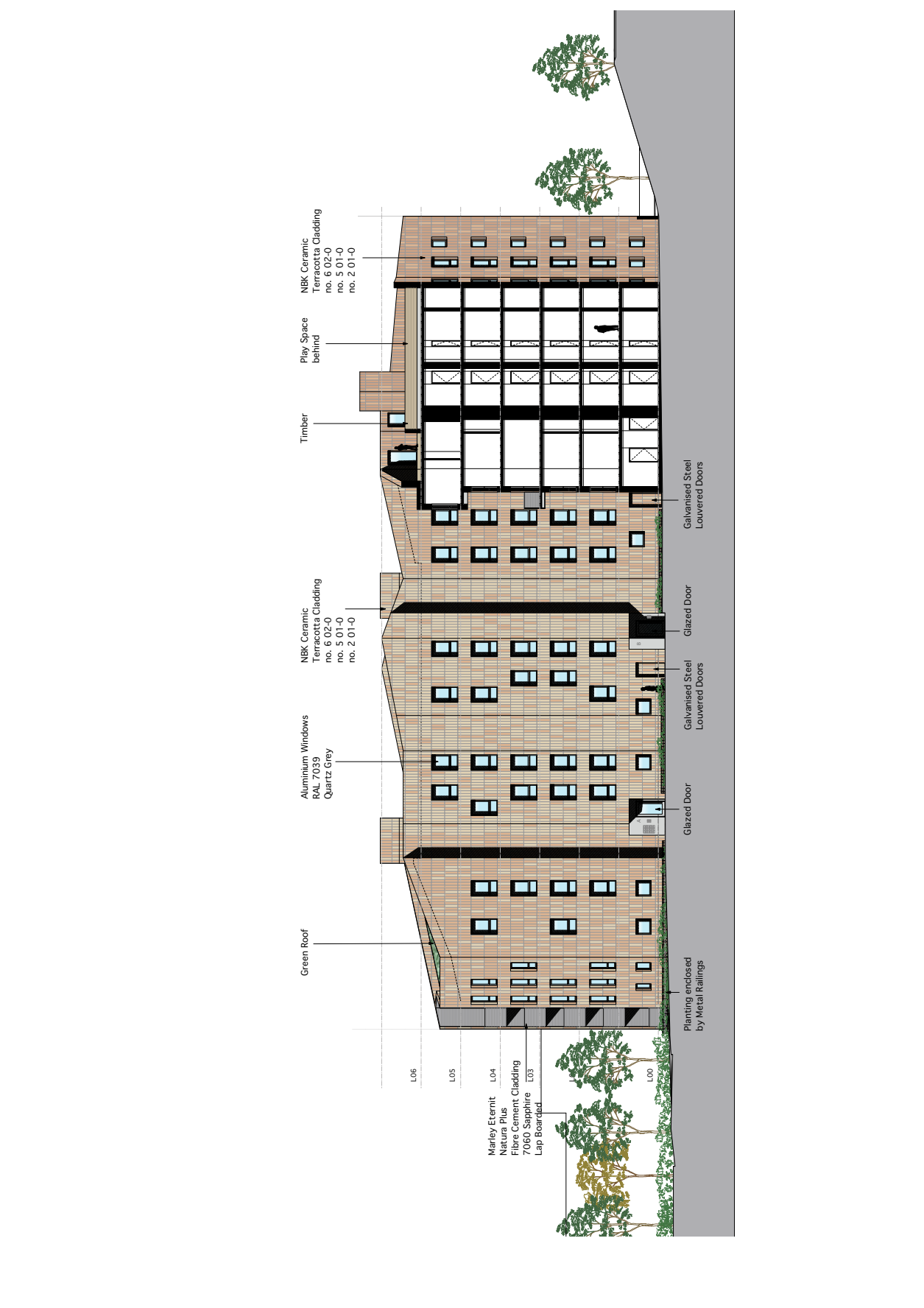
**Notes**

1. Refer to Structural Engineer's drawings and notes for structural details.
2. Refer to Mechanical Engineer's drawings and notes for mechanical details.
3. Refer to Electrical Engineer's drawings and notes for electrical details.
4. Refer to Civil Engineer's drawings and notes for civil details.
5. Refer to Landscape Architect's drawings and notes for landscape details.
6. Refer to Architect's drawings and notes for architectural details.
7. Refer to Interior Designer's drawings and notes for interior details.
8. Refer to Furniture Supplier's drawings and notes for furniture details.
9. Refer to Lighting Designer's drawings and notes for lighting details.
10. Refer to Acoustic Engineer's drawings and notes for acoustic details.
11. Refer to Fire Engineer's drawings and notes for fire details.
12. Refer to Health and Safety Officer's drawings and notes for health and safety details.
13. Refer to Environmental Engineer's drawings and notes for environmental details.
14. Refer to Sustainability Consultant's drawings and notes for sustainability details.
15. Refer to Energy Assessor's drawings and notes for energy details.
16. Refer to Air Quality Assessor's drawings and notes for air quality details.
17. Refer to Noise Assessor's drawings and notes for noise details.
18. Refer to Vibration Assessor's drawings and notes for vibration details.
19. Refer to Groundwater Assessor's drawings and notes for groundwater details.
20. Refer to Contaminated Land Assessor's drawings and notes for contaminated land details.
21. Refer to Flood Assessor's drawings and notes for flood details.
22. Refer to Heritage Assessor's drawings and notes for heritage details.
23. Refer to Archaeologist's drawings and notes for archaeological details.
24. Refer to Historic Buildings Inspector's drawings and notes for historic buildings details.
25. Refer to Planning Officer's drawings and notes for planning details.
26. Refer to Building Control Officer's drawings and notes for building control details.
27. Refer to Fire Authority's drawings and notes for fire authority details.
28. Refer to Local Authority's drawings and notes for local authority details.
29. Refer to Highways Authority's drawings and notes for highways details.
30. Refer to Transport Authority's drawings and notes for transport details.
31. Refer to Police Authority's drawings and notes for police details.
32. Refer to Fire and Rescue Authority's drawings and notes for fire and rescue details.
33. Refer to Environment Agency's drawings and notes for environment agency details.
34. Refer to Natural Resources Wales's drawings and notes for natural resources Wales details.
35. Refer to Historic Environment Wales's drawings and notes for historic environment Wales details.
36. Refer to Natural Resources Wales's drawings and notes for natural resources Wales details.
37. Refer to Historic Environment Wales's drawings and notes for historic environment Wales details.
38. Refer to Natural Resources Wales's drawings and notes for natural resources Wales details.
39. Refer to Historic Environment Wales's drawings and notes for historic environment Wales details.
40. Refer to Natural Resources Wales's drawings and notes for natural resources Wales details.
41. Refer to Historic Environment Wales's drawings and notes for historic environment Wales details.
42. Refer to Natural Resources Wales's drawings and notes for natural resources Wales details.
43. Refer to Historic Environment Wales's drawings and notes for historic environment Wales details.
44. Refer to Natural Resources Wales's drawings and notes for natural resources Wales details.
45. Refer to Historic Environment Wales's drawings and notes for historic environment Wales details.
46. Refer to Natural Resources Wales's drawings and notes for natural resources Wales details.
47. Refer to Historic Environment Wales's drawings and notes for historic environment Wales details.
48. Refer to Natural Resources Wales's drawings and notes for natural resources Wales details.
49. Refer to Historic Environment Wales's drawings and notes for historic environment Wales details.
50. Refer to Natural Resources Wales's drawings and notes for natural resources Wales details.

**Legend**

Material	Color
Marley Eternit	L04
Natura Plus	L05
Fire Cement Cladding	L06
7060 Sapphire	L07
Lapp Boarded	L08

Item	Description	Quantity	Unit	Notes
1	Green Roof	1	Area	See drawing for details
2	Aluminium Windows	120	Units	RAL 7029 Quartz Grey
3	NBK Ceramic Terracotta Cladding	1500	Sq. M	no. 5 01-0 no. 2 01-0
4	Timber	100	Cu. M	See drawing for details
5	Play Space	1	Area	Behind building
6	NBK Ceramic Terracotta Cladding	1500	Sq. M	no. 5 01-0 no. 2 01-0
7	Aluminium Windows	120	Units	RAL 7029 Quartz Grey
8	NBK Ceramic Terracotta Cladding	1500	Sq. M	no. 5 01-0 no. 2 01-0
9	Galvanised Steel Louvered Doors	10	Units	See drawing for details
10	Glazed Door	2	Units	See drawing for details
11	Galvanised Steel Louvered Doors	10	Units	See drawing for details
12	Glazed Door	2	Units	See drawing for details
13	Galvanised Steel Louvered Doors	10	Units	See drawing for details
14	Glazed Door	2	Units	See drawing for details
15	Galvanised Steel Louvered Doors	10	Units	See drawing for details
16	Glazed Door	2	Units	See drawing for details
17	Galvanised Steel Louvered Doors	10	Units	See drawing for details
18	Glazed Door	2	Units	See drawing for details
19	Galvanised Steel Louvered Doors	10	Units	See drawing for details
20	Glazed Door	2	Units	See drawing for details
21	Galvanised Steel Louvered Doors	10	Units	See drawing for details
22	Glazed Door	2	Units	See drawing for details
23	Galvanised Steel Louvered Doors	10	Units	See drawing for details
24	Glazed Door	2	Units	See drawing for details
25	Galvanised Steel Louvered Doors	10	Units	See drawing for details
26	Glazed Door	2	Units	See drawing for details
27	Galvanised Steel Louvered Doors	10	Units	See drawing for details
28	Glazed Door	2	Units	See drawing for details
29	Galvanised Steel Louvered Doors	10	Units	See drawing for details
30	Glazed Door	2	Units	See drawing for details
31	Galvanised Steel Louvered Doors	10	Units	See drawing for details
32	Glazed Door	2	Units	See drawing for details
33	Galvanised Steel Louvered Doors	10	Units	See drawing for details
34	Glazed Door	2	Units	See drawing for details
35	Galvanised Steel Louvered Doors	10	Units	See drawing for details
36	Glazed Door	2	Units	See drawing for details
37	Galvanised Steel Louvered Doors	10	Units	See drawing for details
38	Glazed Door	2	Units	See drawing for details
39	Galvanised Steel Louvered Doors	10	Units	See drawing for details
40	Glazed Door	2	Units	See drawing for details
41	Galvanised Steel Louvered Doors	10	Units	See drawing for details
42	Glazed Door	2	Units	See drawing for details
43	Galvanised Steel Louvered Doors	10	Units	See drawing for details
44	Glazed Door	2	Units	See drawing for details
45	Galvanised Steel Louvered Doors	10	Units	See drawing for details
46	Glazed Door	2	Units	See drawing for details
47	Galvanised Steel Louvered Doors	10	Units	See drawing for details
48	Glazed Door	2	Units	See drawing for details
49	Galvanised Steel Louvered Doors	10	Units	See drawing for details
50	Glazed Door	2	Units	See drawing for details



**Tumhold Properties Ltd.**

**Stephen Davy  
Peer Smith**

**Architects**

100, 101, 102, 103, 104, 105, 106, 107, 108, 109, 110, 111, 112, 113, 114, 115, 116, 117, 118, 119, 120, 121, 122, 123, 124, 125, 126, 127, 128, 129, 130, 131, 132, 133, 134, 135, 136, 137, 138, 139, 140, 141, 142, 143, 144, 145, 146, 147, 148, 149, 150, 151, 152, 153, 154, 155, 156, 157, 158, 159, 160, 161, 162, 163, 164, 165, 166, 167, 168, 169, 170, 171, 172, 173, 174, 175, 176, 177, 178, 179, 180, 181, 182, 183, 184, 185, 186, 187, 188, 189, 190, 191, 192, 193, 194, 195, 196, 197, 198, 199, 200, 201, 202, 203, 204, 205, 206, 207, 208, 209, 210, 211, 212, 213, 214, 215, 216, 217, 218, 219, 220, 221, 222, 223, 224, 225, 226, 227, 228, 229, 230, 231, 232, 233, 234, 235, 236, 237, 238, 239, 240, 241, 242, 243, 244, 245, 246, 247, 248, 249, 250, 251, 252, 253, 254, 255, 256, 257, 258, 259, 260, 261, 262, 263, 264, 265, 266, 267, 268, 269, 270, 271, 272, 273, 274, 275, 276, 277, 278, 279, 280, 281, 282, 283, 284, 285, 286, 287, 288, 289, 290, 291, 292, 293, 294, 295, 296, 297, 298, 299, 300, 301, 302, 303, 304, 305, 306, 307, 308, 309, 310, 311, 312, 313, 314, 315, 316, 317, 318, 319, 320, 321, 322, 323, 324, 325, 326, 327, 328, 329, 330, 331, 332, 333, 334, 335, 336, 337, 338, 339, 340, 341, 342, 343, 344, 345, 346, 347, 348, 349, 350, 351, 352, 353, 354, 355, 356, 357, 358, 359, 360, 361, 362, 363, 364, 365, 366, 367, 368, 369, 370, 371, 372, 373, 374, 375, 376, 377, 378, 379, 380, 381, 382, 383, 384, 385, 386, 387, 388, 389, 390, 391, 392, 393, 394, 395, 396, 397, 398, 399, 400, 401, 402, 403, 404, 405, 406, 407, 408, 409, 410, 411, 412, 413, 414, 415, 416, 417, 418, 419, 420, 421, 422, 423, 424, 425, 426, 427, 428, 429, 430, 431, 432, 433, 434, 435, 436, 437, 438, 439, 440, 441, 442, 443, 444, 445, 446, 447, 448, 449, 450, 451, 452, 453, 454, 455, 456, 457, 458, 459, 460, 461, 462, 463, 464, 465, 466, 467, 468, 469, 470, 471, 472, 473, 474, 475, 476, 477, 478, 479, 480, 481, 482, 483, 484, 485, 486, 487, 488, 489, 490, 491, 492, 493, 494, 495, 496, 497, 498, 499, 500, 501, 502, 503, 504, 505, 506, 507, 508, 509, 510, 511, 512, 513, 514, 515, 516, 517, 518, 519, 520, 521, 522, 523, 524, 525, 526, 527, 528, 529, 530, 531, 532, 533, 534, 535, 536, 537, 538, 539, 540, 541, 542, 543, 544, 545, 546, 547, 548, 549, 550, 551, 552, 553, 554, 555, 556, 557, 558, 559, 560, 561, 562, 563, 564, 565, 566, 567, 568, 569, 570, 571, 572, 573, 574, 575, 576, 577, 578, 579, 580, 581, 582, 583, 584, 585, 586, 587, 588, 589, 590, 591, 592, 593, 594, 595, 596, 597, 598, 599, 600, 601, 602, 603, 604, 605, 606, 607, 608, 609, 610, 611, 612, 613, 614, 615, 616, 617, 618, 619, 620, 621, 622, 623, 624, 625, 626, 627, 628, 629, 630, 631, 632, 633, 634, 635, 636, 637, 638, 639, 640, 641, 642, 643, 644, 645, 646, 647, 648, 649, 650, 651, 652, 653, 654, 655, 656, 657, 658, 659, 660, 661, 662, 663, 664, 665, 666, 667, 668, 669, 670, 671, 672, 673, 674, 675, 676, 677, 678, 679, 680, 681, 682, 683, 684, 685, 686, 687, 688, 689, 690, 691, 692, 693, 694, 695, 696, 697, 698, 699, 700, 701, 702, 703, 704, 705, 706, 707, 708, 709, 710, 711, 712, 713, 714, 715, 716, 717, 718, 719, 720, 721, 722, 723, 724, 725, 726, 727, 728, 729, 730, 731, 732, 733, 734, 735, 736, 737, 738, 739, 740, 741, 742, 743, 744, 745, 746, 747, 748, 749, 750, 751, 752, 753, 754, 755, 756, 757, 758, 759, 760, 761, 762, 763, 764, 765, 766, 767, 768, 769, 770, 771, 772, 773, 774, 775, 776, 777, 778, 779, 780, 781, 782, 783, 784, 785, 786, 787, 788, 789, 790, 791, 792, 793, 794, 795, 796, 797, 798, 799, 800, 801, 802, 803, 804, 805, 806, 807, 808, 809, 810, 811, 812, 813, 814, 815, 816, 817, 818, 819, 820, 821, 822, 823, 824, 825, 826, 827, 828, 829, 830, 831, 832, 833, 834, 835, 836, 837, 838, 839, 840, 841, 842, 843, 844, 845, 846, 847, 848, 849, 850, 851, 852, 853, 854, 855, 856, 857, 858, 859, 860, 861, 862, 863, 864, 865, 866, 867, 868, 869, 870, 871, 872, 873, 874, 875, 876, 877, 878, 879, 880, 881, 882, 883, 884, 885, 886, 887, 888, 889, 890, 891, 892, 893, 894, 895, 896, 897, 898, 899, 900, 901, 902, 903, 904, 905, 906, 907, 908, 909, 910, 911, 912, 913, 914, 915, 916, 917, 918, 919, 920, 921, 922, 923, 924, 925, 926, 927, 928, 929, 930, 931, 932, 933, 934, 935, 936, 937, 938, 939, 940, 941, 942, 943, 944, 945, 946, 947, 948, 949, 950, 951, 952, 953, 954, 955, 956, 957, 958, 959, 960, 961, 962, 963, 964, 965, 966, 967, 968, 969, 970, 971, 972, 973, 974, 975, 976, 977, 978, 979, 980, 981, 982, 983, 984, 985, 986, 987, 988, 989, 990, 991, 992, 993, 994, 995, 996, 997, 998, 999, 1000