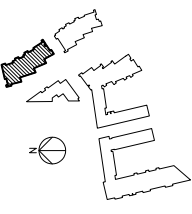


**NOTES**

1. The Contractor must check and confirm dimensions.
2. All materials and finishes must be approved and indicated by the Architect before work commences.
3. This drawing is not to be scaled.
4. All work and materials to be in accordance with current Codes of Practice and British Standards.
5. Layout of units is indicative only.



**Materials Key**

1. Full Height Glazing.
2. GRC Panel
3. Terracotta Panels
4. Buff Brick
5. Antique Red Brick Glazing.
6. Coloured Glazing
7. Timber Infill Panel
8. Glass Balconies
9. Steel Balconies
10. Steel Frame
11. Shop Front Glazing
12. Aluminium Louvres
13. Steel Plant Louvres
14. Platinum White Brick
15. Fair-Faced Concrete
16. Timber Screen
17. Open Grille

06/02/09  
27/02/09  
P3 Planning update.  
P2 Planning Issue.  
Rev

**ROLFE JUDD**

PLANNING ARCHITECTS  
ARCHITECTS  
INTERIORS  
CLIMATE  
LIGHTING  
SOUND  
CIVIL  
STRUCTURAL  
MECHANICAL  
ELECTRICAL  
PLUMBING  
HEATING  
VENTILATION  
AIR CONDITIONING  
LIFTWORKS  
PAINTWORK  
GLAZING  
FLOORING  
SCAFFOLDING  
CONSTRUCTION  
MANAGEMENT  
PROJECT MANAGEMENT  
CONSTRUCTION  
MANAGEMENT  
CONSTRUCTION  
MANAGEMENT

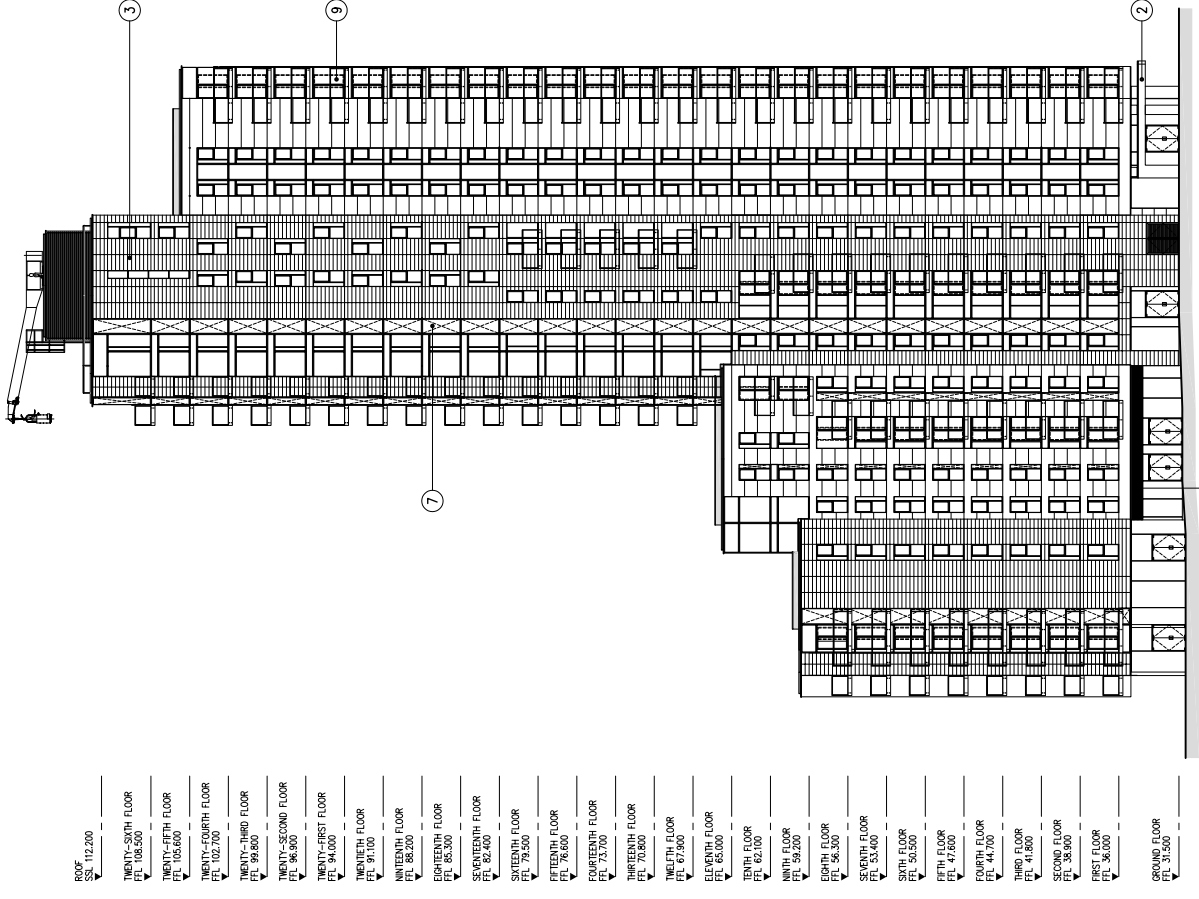
Client  
**BERKELEY HOMES (CAPITAL) PLC**

Project  
**WOODBERRY DOWN  
KSS1 REVISED PLANNING APPLICATION**

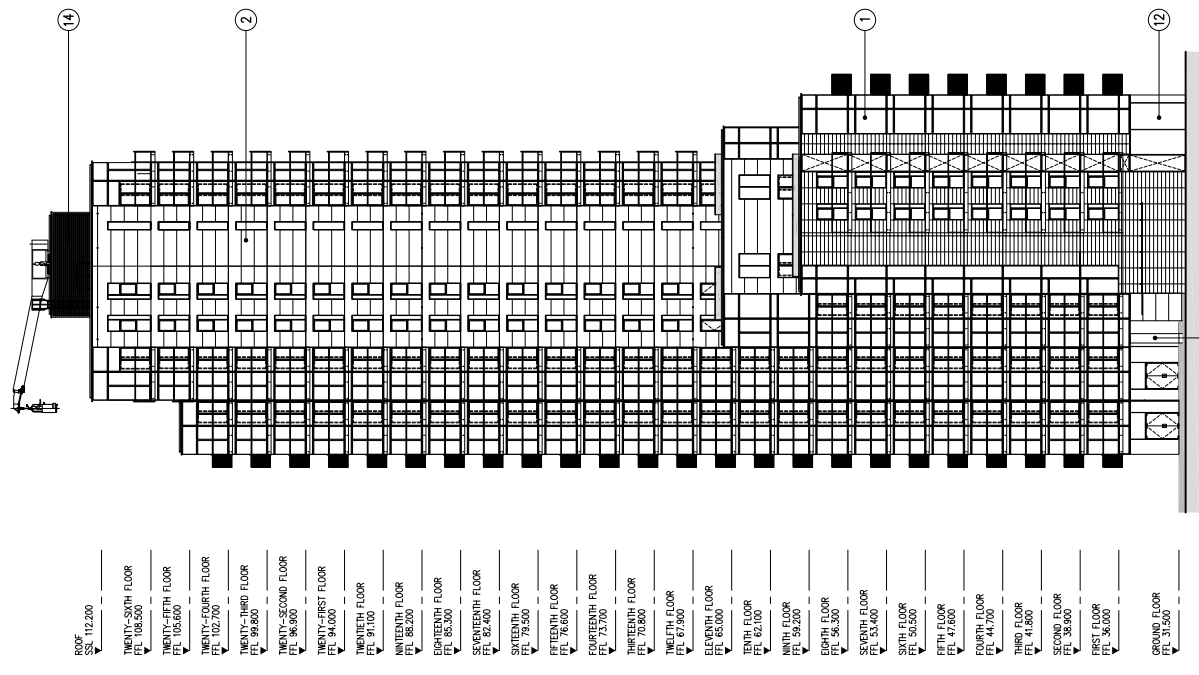
Block A  
**GA ELEVATIONS (SOUTH & EAST)**

Scale	1:200 (A1)	Date	NOV 2008	Drawn	ROH
Drawing No	4894 / T1-A-(20)E02	Revision			P3

© Woodberry Down Block A, KSS1 Rev 2008  
© Copyright Rolfe Judd Ltd



**02 EAST ELEVATION**  
SCALE: 1:200 (A1)



**01 SOUTH ELEVATION**  
SCALE: 1:200 (A1)

This work is shown in rough when printed at the size indicated in the title block.  
Woodberry