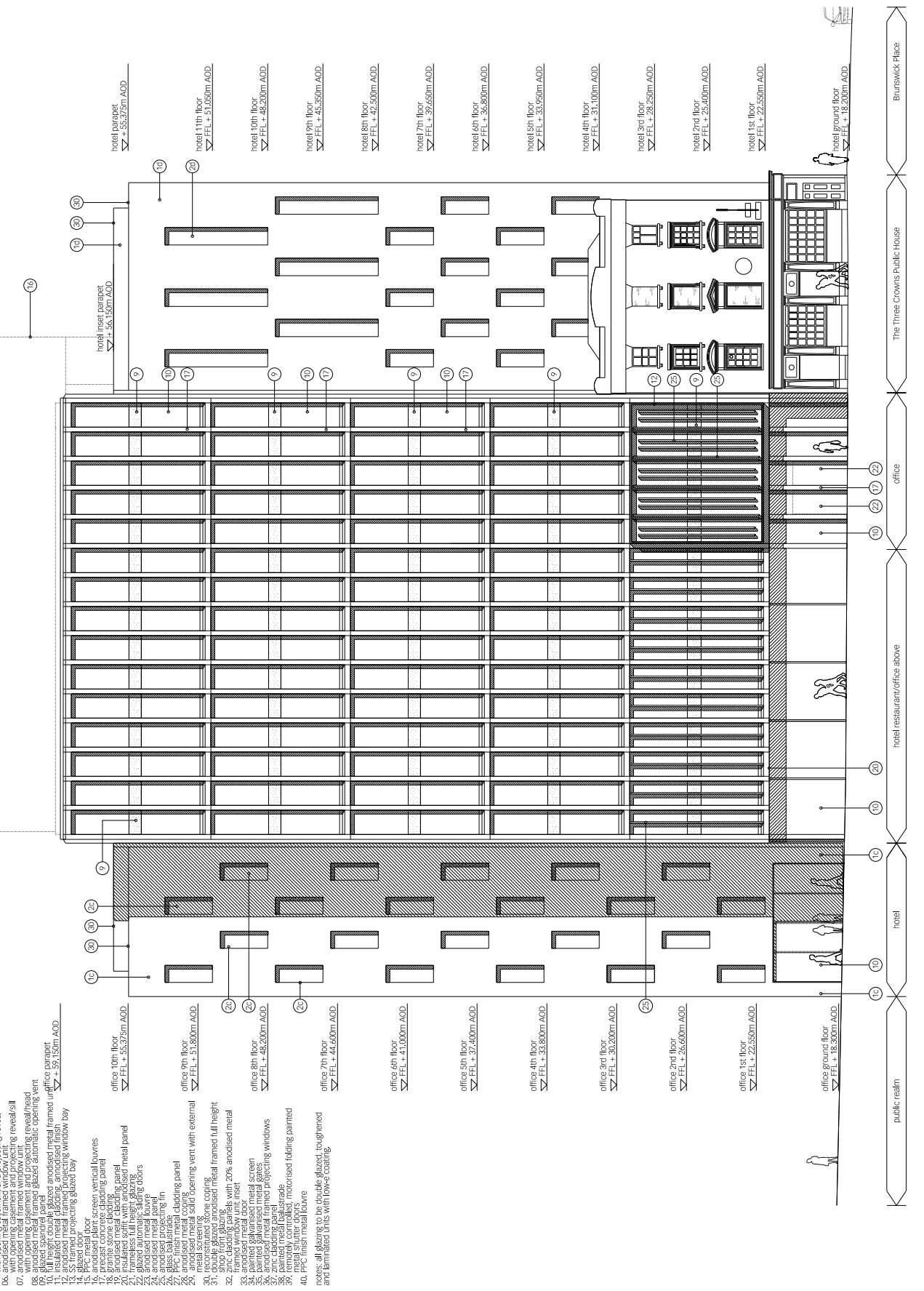


- Legend**
- 01a. facing brickwork type 1
 - 01b. facing brickwork type 2
 - 01c. facing brickwork type 3
 - 01d. facing brickwork type 4
 - 01e. facing brickwork type 5
 - 02a. recessed brickwork panel type 1
 - 02b. recessed brickwork panel type 2
 - 02c. recessed brickwork panel type 3
 - 03. anodised metal framed window unit
 - 04. anodised metal framed window unit
 - 05. anodised metal framed window unit with opening casement and projecting reveal
 - 06. anodised metal framed window unit with opening casement and projecting reveal/sill
 - 07. anodised metal framed glazed automatic opening vent with opening casement and projecting reveal/head
 - 08. anodised metal framed glazed automatic opening vent
 - 09. full height double glazed anodised metal framed office parapet
 - 10. full height double glazed anodised metal framed office parapet
 - 11. insulated metal cladding, anodised finish
 - 12. insulated metal cladding, anodised finish with projecting window bay
 - 13. SS framed projecting glazed bay
 - 14. glazed door
 - 15. glazed door
 - 16. anodised plant screen vertical louvres
 - 17. precast concrete cladding panel
 - 18. anodised metal cladding panel
 - 19. anodised metal cladding panel
 - 20. insulated subsoil with anodised metal panel
 - 21. insulated subsoil with anodised metal panel
 - 22. glazed automatic sliding doors
 - 23. anodised metal panel
 - 24. anodised metal panel
 - 25. anodised projecting fin
 - 26. PFC finish metal cladding panel
 - 27. anodised metal coping
 - 28. anodised metal coping
 - 29. anodised metal coping
 - 30. reconstructed stone coping
 - 31. zinc cladding panels with 20% anodised metal shop front glazing
 - 32. zinc cladding panels with 20% anodised metal shop front glazing
 - 33. anodised metal door
 - 34. painted galvanised metal screen
 - 35. anodised metal framed projecting windows
 - 36. anodised metal framed projecting windows
 - 37. painted metal balustrade
 - 38. remotely controlled, motorised folding painted metal screen
 - 39. remotely controlled, motorised folding painted metal screen
 - 40. PFC finish metal louvre



plant screen
 > +24.650m A.O.D.

office 10th floor
 > F.F.L. + 55.275m A.O.D.

office 9th floor
 > F.F.L. + 51.900m A.O.D.

office 8th floor
 > F.F.L. + 48.200m A.O.D.

office 7th floor
 > F.F.L. + 44.600m A.O.D.

office 6th floor
 > F.F.L. + 41.000m A.O.D.

office 5th floor
 > F.F.L. + 37.400m A.O.D.

office 4th floor
 > F.F.L. + 33.800m A.O.D.

office 3rd floor
 > F.F.L. + 30.200m A.O.D.

office 2nd floor
 > F.F.L. + 26.600m A.O.D.

office 1st floor
 > F.F.L. + 22.500m A.O.D.

office ground floor
 > F.F.L. + 18.300m A.O.D.

public realm

hotel
 > +18.300m A.O.D.

hotel restaurant/office above

office

Brunswick Place

hotel ground floor
 > F.F.L. + 18.300m A.O.D.

hotel 1st floor
 > F.F.L. + 22.500m A.O.D.

hotel 2nd floor
 > F.F.L. + 25.400m A.O.D.

hotel 3rd floor
 > F.F.L. + 28.200m A.O.D.

hotel 4th floor
 > F.F.L. + 31.000m A.O.D.

hotel 5th floor
 > F.F.L. + 33.900m A.O.D.

hotel 6th floor
 > F.F.L. + 36.800m A.O.D.

hotel 7th floor
 > F.F.L. + 39.650m A.O.D.

hotel 8th floor
 > F.F.L. + 42.500m A.O.D.

hotel 9th floor
 > F.F.L. + 45.350m A.O.D.

hotel 10th floor
 > F.F.L. + 48.200m A.O.D.

hotel 11th floor
 > F.F.L. + 51.050m A.O.D.

hotel parapet
 > + 55.275m A.O.D.

hotel insect parapet
 > + 55.275m A.O.D.

notes

notes, all glazing to be double glazed, toughened and laminated units with low-e coating.

key plan

This drawing is the property of Lifschutz Davidson Sandilands. No disclosure or copy of this drawing is to be made without the written permission of Lifschutz Davidson Sandilands.

project
 10 East Road, N1

client
 Rocket Investments

architect
 Lifschutz Davidson Sandilands
 Lifschutz Studios
 22 St. Peter's Square
 London W6 9NW
 T +44 (0)20 8600 4800
 F +44 (0)20 8600 4700
 mail@lifsd.com

drawing title
 proposed south block west elevation

scale: at A1 1:100 at A3 1:200

drawn RS date 07.08

job no. 0761 drawing PA184 rev. A