

hotel window types revised, office floor revised, facade as ground floor revised, layout of plant screen revised, height level of office parapet amended, legend and annotations amended.

hotel inset parapet
▽ FFL + 62.00m AOD

hotel inset parapet
▽ + 55.150m AOD

hotel parapet
▽ + 55.375m AOD

hotel 11th floor
▽ FFL + 51.050m AOD

hotel 10th floor
▽ FFL + 48.200m AOD

hotel 9th floor
▽ FFL + 45.350m AOD

hotel 8th floor
▽ FFL + 42.500m AOD

hotel 7th floor
▽ FFL + 39.650m AOD

hotel 6th floor
▽ FFL + 36.800m AOD

hotel 5th floor
▽ FFL + 33.950m AOD

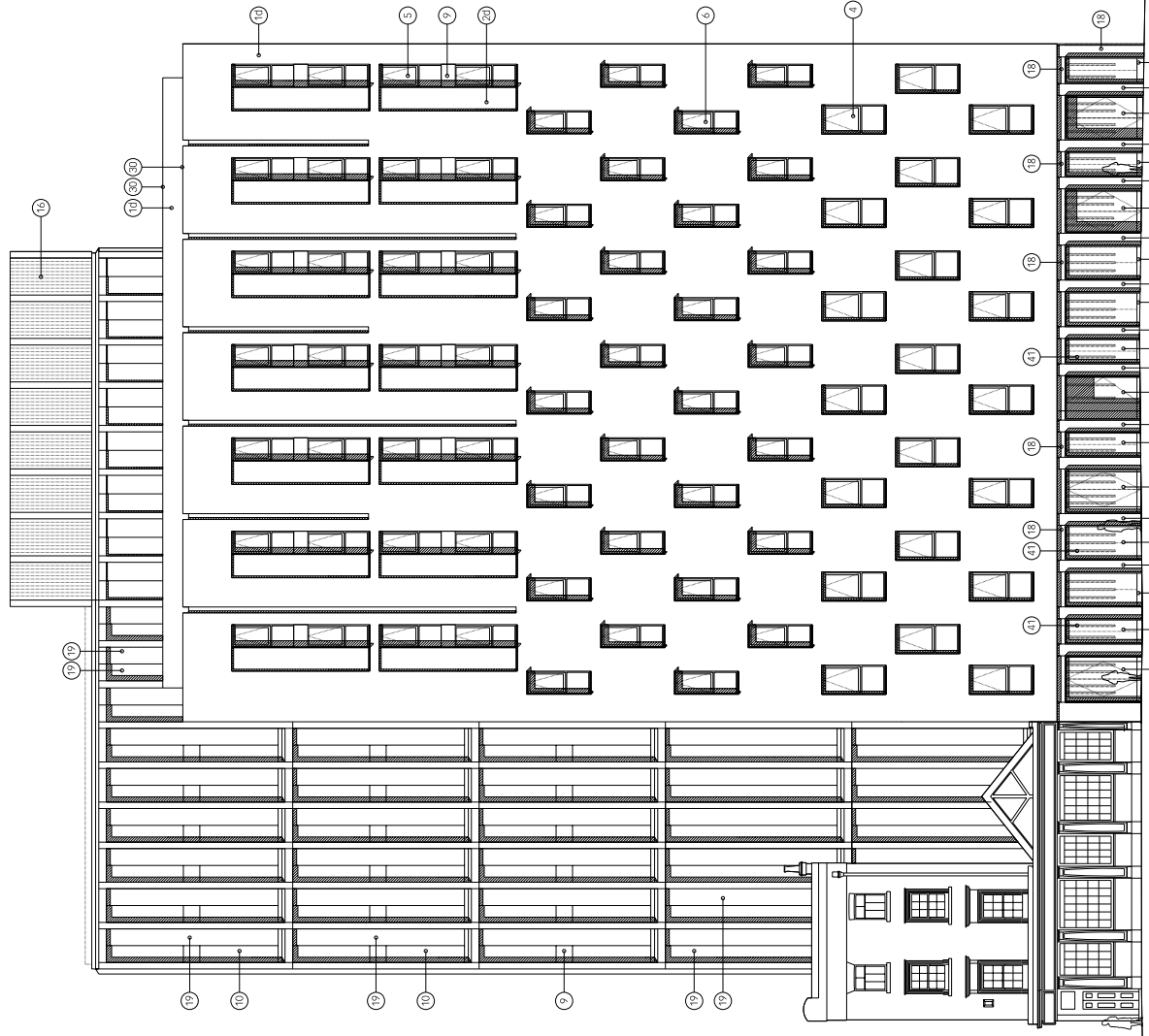
hotel 4th floor
▽ FFL + 31.100m AOD

hotel 3rd floor
▽ FFL + 28.250m AOD

hotel 2nd floor
▽ FFL + 25.400m AOD

hotel 1st floor
▽ FFL + 22.550m AOD

hotel ground floor
▽ FFL + 18.200m AOD

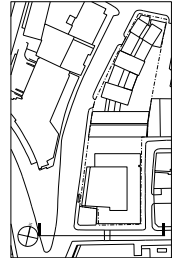


- Legend
- 01a, facing brickwork type 1
 - 01b, facing brickwork type 2
 - 01c, facing brickwork type 3
 - 01d, facing brickwork type 4
 - 01e, facing brickwork type 5
 - 02a, recessed brickwork panel type 1
 - 02b, recessed brickwork panel type 2
 - 02c, recessed brickwork panel type 3
 - 03, anodised metal framed window unit
 - 04, anodised metal framed window unit
 - 05, anodised metal framed window unit with opening casement and projecting reveal
 - 06, anodised metal framed window unit with opening casement and projecting reveal/sill
 - 07, anodised metal framed glazed automatic opening vent
 - 08, anodised metal framed glazed anodised metal framed unit
 - 09, full height double glazed anodised metal framed unit
 - 10, insulating metal cladding, anodised finish
 - 11, insulating metal cladding, anodised finish with projecting window bay
 - 12, glazed door
 - 13, SS framed projecting glazed bay
 - 14, glazed door
 - 15, anodised plant screen vertical louvres
 - 16, precast concrete cladding panel
 - 17, anodised metal cladding panel
 - 18, anodised metal cladding panel
 - 19, insulated wall with anodised metal panel
 - 20, glazed automatic sliding doors
 - 21, glazed automatic sliding doors
 - 22, anodised metal panel
 - 23, anodised projecting fin
 - 24, anodised projecting fin
 - 25, PVC finish metal cladding panel
 - 26, anodised metal coping
 - 27, anodised metal coping
 - 28, anodised metal coping
 - 29, anodised metal coping
 - 30, reconstructed stone coping
 - 31, shop front glazing
 - 32, zinc cladding panels with 20% anodised metal
 - 33, anodised metal door
 - 34, painted galvanised metal screen
 - 35, anodised metal framed projecting windows
 - 36, anodised metal framed projecting windows
 - 37, painted metal cladding
 - 38, painted metal cladding
 - 39, remotely controlled, motorised folding painted
 - 40, PVC finish metal louvre
 - 41, anodised metal fins

notes: all glazing to be double glazed, toughened and laminated units with low-e coating.

This drawing is the property of Lifschutz Davidson Sandilands. No disclosure or copy of this drawing may be made without the written permission of Lifschutz Davidson Sandilands.

key plan



project

10 East Road, N1

client

Rocket Investments

architect

Lifschutz Davidson Sandilands

Lifschutz Davidson Sandilands
22 St. Peter's Square
London W6 9NW
T +44 (0)20 8600 4800
F +44 (0)20 8600 4700
mail@lifsd.com

drawing title

proposed south block
south elevation

scale at A1

1:100

scale at A3

1:200

drawn

RS

date

07.08

job no.

0761

drawing

PA183

rev.

A

13-27 Brunswick Place

Corsham Street

hotel

The Three Crowns Public House

East Road