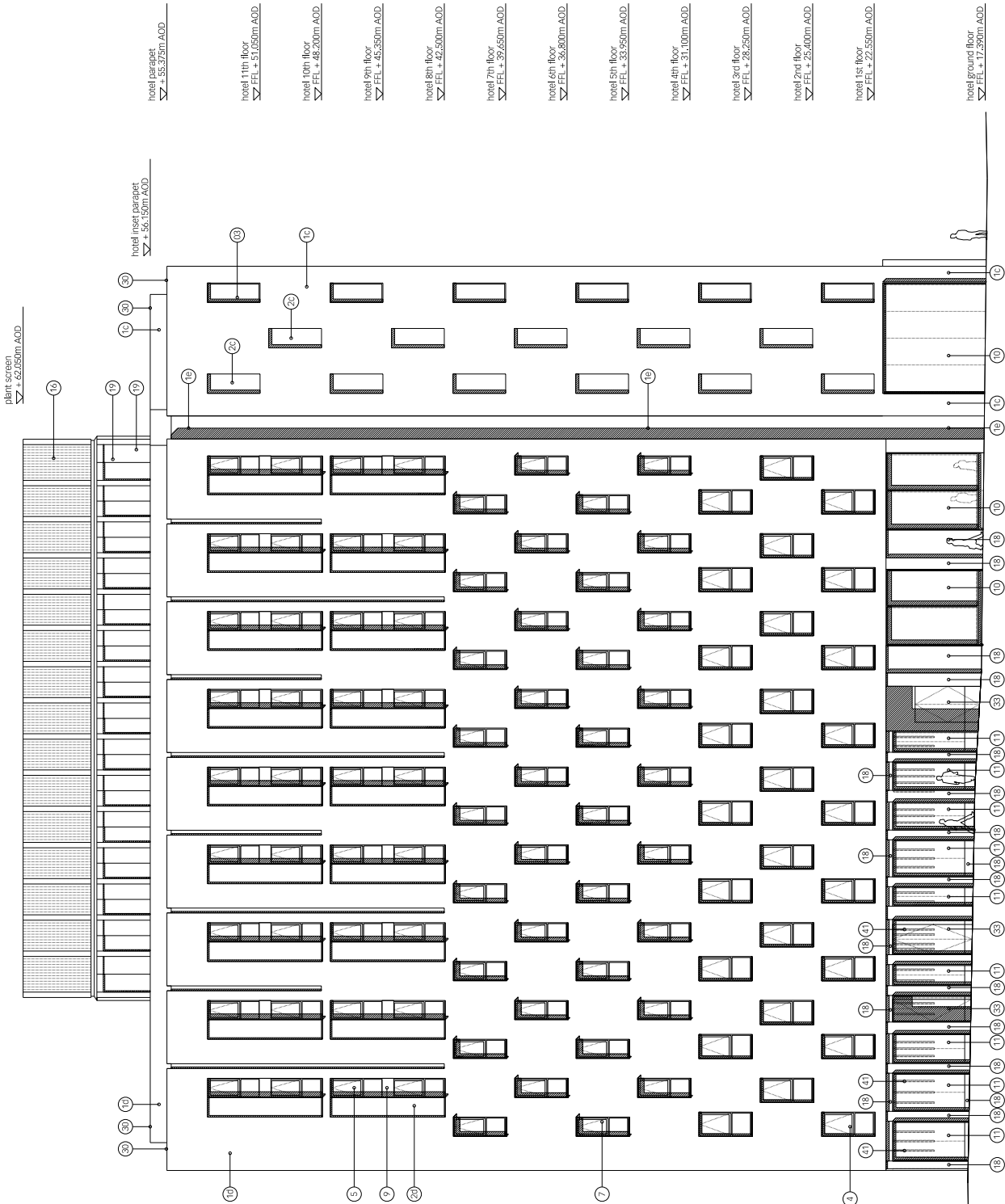


Advise to hotel consider omitted.
hotel window recessed, height
elevation at ground floor revised.
layout of plant screen revised.
legend and annotations amended.

Legend

- 01a. facing brickwork type 1
- 01b. facing brickwork type 2
- 01c. facing brickwork type 3
- 01d. facing brickwork type 4
- 01e. facing brickwork type 5
- 02a. recessed brickwork panel type 1
- 02b. recessed brickwork panel type 2
- 02c. recessed brickwork panel type 3
- 03. anodised metal framed window unit
- 04. anodised metal framed window unit
- 05. anodised metal framed window unit with opening casement and projecting reveal
- 06. anodised metal framed window unit with opening casement and projecting reveal/sill
- 07. anodised metal framed window unit with opening casement and projecting reveal/head
- 08. anodised metal framed glazed automatic opening vent
- 09. anodised metal framed double glazed anodised metal framed unit
- 10. full height double glazed anodised metal framed unit
- 11. insulapex metal cladding, anodised finish
- 12. insulapex metal cladding, anodised finish, projecting window bay
- 14. glazed door
- 15. glazed door
- 16. anodised plant screen vertical louvres
- 17. precast concrete cladding panel
- 18. anodised metal cladding panel
- 19. anodised metal cladding panel
- 20. insulapex sumi with anodised metal panel
- 21. insulapex sumi with anodised metal panel
- 22. glazed automatic sliding doors
- 23. anodised metal panel
- 24. anodised metal panel
- 25. anodised projecting fin
- 27. PPC finish metal cladding panel
- 28. anodised metal coping
- 29. anodised metal coping
- 30. reconstructed stone coping
- 31. shop front glazing
- 32. zinc cladding panels with 20% anodised metal
- 33. anodised metal door
- 34. painted galvanised metal screen
- 35. anodised metal framed projecting windows
- 36. anodised metal framed projecting windows
- 38. painted metal balustrade
- 39. remotely controlled, motorised folding painted
- 40. PPC finish metal louvre
- 41. anodised metal fins

notes: all glazing to be double glazed, toughened and laminated units with low-e coating.



notes

- hotel parapet
▽ FFL + 55.750m A.O.D.
- hotel inset parapet
▽ + 56.150m A.O.D.
- hotel 11th floor
▽ FFL + 51.050m A.O.D.
- hotel 10th floor
▽ FFL + 49.200m A.O.D.
- hotel 9th floor
▽ FFL + 45.350m A.O.D.
- hotel 8th floor
▽ FFL + 42.500m A.O.D.
- hotel 7th floor
▽ FFL + 39.650m A.O.D.
- hotel 6th floor
▽ FFL + 36.800m A.O.D.
- hotel 5th floor
▽ FFL + 33.950m A.O.D.
- hotel 4th floor
▽ FFL + 31.100m A.O.D.
- hotel 3rd floor
▽ FFL + 28.250m A.O.D.
- hotel 2nd floor
▽ FFL + 25.400m A.O.D.
- hotel 1st floor
▽ FFL + 22.550m A.O.D.
- hotel ground floor
▽ FFL + 17.350m A.O.D.

This drawing is the property of Lifschutz Davidson Sandilands. No disclosure or copy of it may be made without the written permission of Lifschutz Davidson Sandilands.

key plan



project

10 East Road, N1

client

Rocket Investments

architect

Lifschutz
Davidson
Sandilands

Lifschutz Studios
22 St. Peter's Square
London W6 9NW
T +44 (0)20 8600 4800
F +44 (0)20 8600 4700
mail@lifsd.com

drawing title

proposed south block
east elevation

scale at A1 1:100 scale at A3 1:200 scale at A4 1:400
date 07.08 drawn RS

job no. 0761 drawing PA182 rev. A

Brunswick Place

hotel

public realm