

approval of window openings of hotel facade, and revision of facade revised layout of office parapet amended, layout of plant screen and annotations amended.

office parapet  
 SZ FFL = 59,150m AOD

plant screen  
 SZ FFL = 62,650m AOD

hotel parapet  
 SZ FFL = 55,970m AOD

hotel 11th floor  
 SZ FFL = 51,050m AOD

hotel 10th floor  
 SZ FFL = 46,200m AOD

hotel 9th floor  
 SZ FFL = 41,350m AOD

hotel 8th floor  
 SZ FFL = 42,500m AOD

hotel 7th floor  
 SZ FFL = 37,650m AOD

hotel 6th floor  
 SZ FFL = 36,800m AOD

hotel 5th floor  
 SZ FFL = 33,950m AOD

hotel 4th floor  
 SZ FFL = 31,100m AOD

hotel 3rd floor  
 SZ FFL = 28,250m AOD

hotel 2nd floor  
 SZ FFL = 25,400m AOD

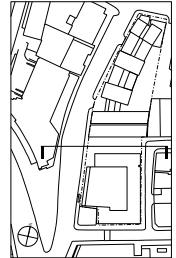
hotel 1st floor  
 SZ FFL = 22,550m AOD

hotel ground floor  
 SZ FFL = 17,650m AOD

notes

This drawing is the property of Lifschutz Davidson Sandilands. No disclosure or copy of it may be made without the written permission of Lifschutz Davidson Sandilands.

key plan



project

10 East Road, N1

client

Rocket Investments

architect

Lifschutz Davidson Sandilands  
 Lifschutz Studios  
 22 St. Peter's Square  
 London W6 9NW  
 T +44 (0)20 8600 4800  
 F +44 (0)20 8600 4760  
 mail@lifsd.com

drawing title

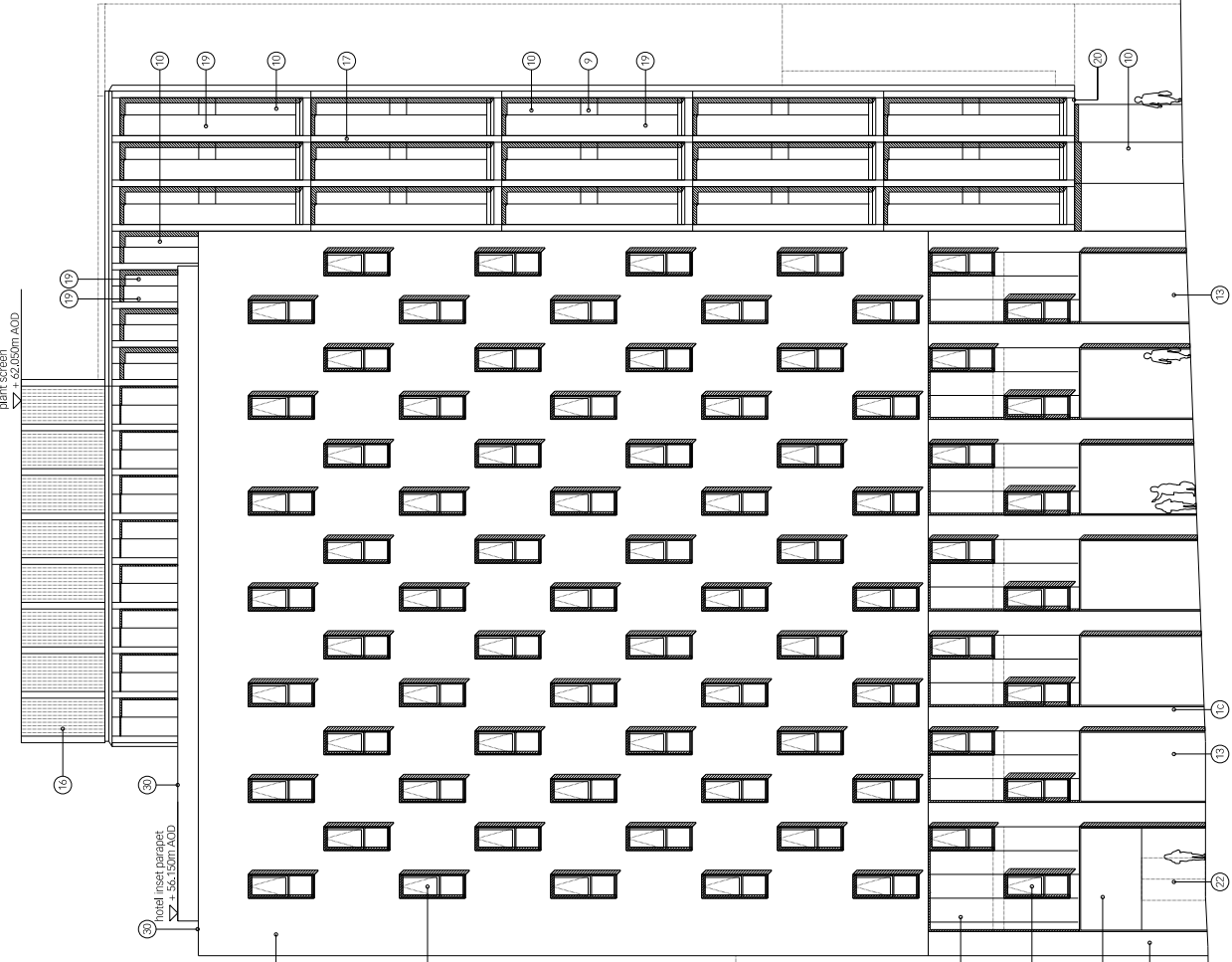
proposed south block north elevation

scale at A1 1:100 scale at A3 1:200 drawn RS date 07.08

job no. 0761 drawing PA181 rev. A

- 01a. facing brickwork type 1
- 01b. facing brickwork type 2
- 01c. facing brickwork type 3
- 01d. facing brickwork type 4
- 01e. facing brickwork type 5
- 02a. recessed brickwork panel type 1
- 02b. recessed brickwork panel type 2
- 02c. recessed brickwork panel type 3
- 03. anodised metal framed window unit
- 04. anodised metal framed window unit
- 05. anodised metal framed window unit with opening casement and projecting reveal/sill
- 06. anodised metal framed window unit with opening casement and projecting reveal/sill with opening casement and projecting reveal/sill
- 07. anodised metal framed glazed automatic opening vent
- 08. anodised metal framed glazed automatic opening vent
- 09. full height double glazed anodised metal framed unit
- 10. full height double glazed anodised metal framed unit
- 11. insulated metal cladding, anodised finish
- 12. insulated metal cladding, anodised finish with projecting window bay
- 13. SS framed projecting glazed bay
- 14. glazed door
- 15. anodised plant screen vertical louvres
- 16. precast concrete cladding panel
- 17. anodised metal cladding panel
- 18. insulated unit with anodised metal panel
- 19. glazed automatic sliding doors
- 20. anodised metal panel
- 21. anodised metal panel
- 22. anodised projecting fin
- 23. PPC finish metal cladding panel
- 24. anodised metal coping
- 25. anodised metal coping
- 26. reconstructed stone coping
- 27. zinc cladding panels with 20% anodised metal
- 28. zinc cladding panels with 20% anodised metal
- 29. zinc cladding panels with 20% anodised metal
- 30. zinc cladding panels with 20% anodised metal
- 31. zinc cladding panels with 20% anodised metal
- 32. zinc cladding panels with 20% anodised metal
- 33. anodised metal door
- 34. painted galvanised metal screen
- 35. anodised metal framed projecting windows
- 36. anodised metal framed projecting windows
- 37. painted metal cladding
- 38. remotely controlled, motorised folding painted
- 39. remotely controlled, motorised folding painted
- 40. PPC finish metal louvre

notes: all glazing to be double glazed, toughened and laminated units with low-e coating.



1-13 Corstam Street  
 Corstam Street  
 hotel  
 office  
 East Road