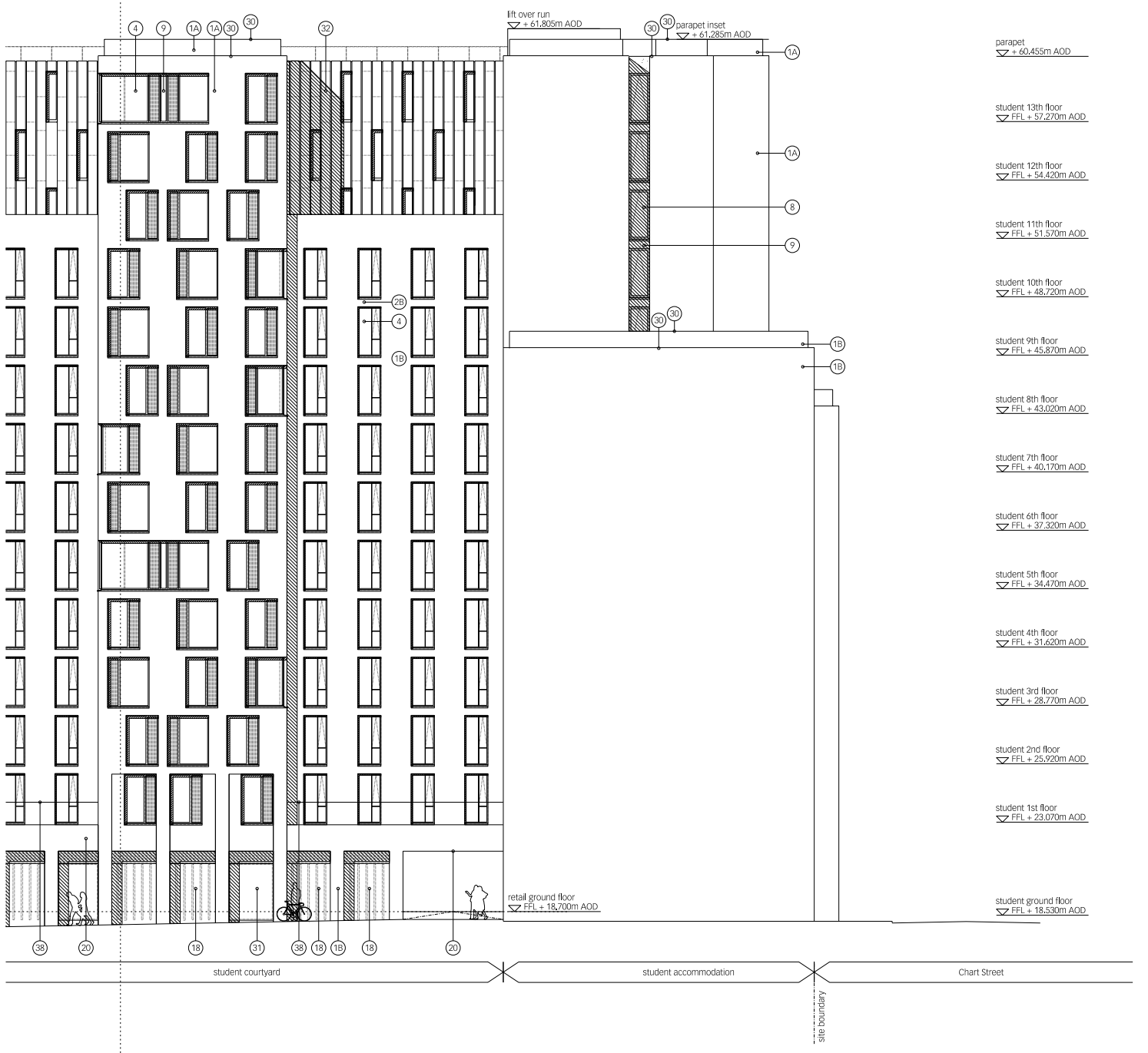


for continuation refer to drawing 0761 PA179

legend

- 01a. facing brickwork type 1
- 01b. facing brickwork type 2
- 01c. facing brickwork type 3
- 01d. facing brickwork type 4
- 01e. facing brickwork type 5
- 02a. recessed brickwork panel type 1
- 02b. recessed brickwork panel type 2
- 02c. recessed brickwork panel type 3
- 02d. recessed brickwork panel type 4
- 03. anodised metal framed window unit
- 04. anodised metal framed window unit with opening casement
- 05. anodised metal framed window unit with opening casement and projecting reveal
- 06. anodised metal framed window unit with opening casement and projecting reveal/sill
- 07. anodised metal framed window unit with opening casement and projecting reveal/head
- 08. anodised metal framed glazed automatic opening vent
- 09. glazed spandrel panel
- 10. full height double glazed anodised metal framed unit
- 11. insulated metal cladding, anodised finish
- 12. anodised metal framed projecting window bay
- 13. stainless steel framed projecting glazed bay
- 14. glazed door
- 15. PPC metal floor
- 16. anodised plant screen vertical louvres
- 17. precast concrete cladding panel
- 18. granite stone cladding
- 19. anodised metal cladding panel
- 20. insulated soffit with anodised metal panel
- 21. frameless full height glazing
- 22. glazed automatic sliding doors
- 23. anodised metal louvre
- 24. anodised metal panel
- 25. anodised projecting fin
- 26. glass balustrade
- 27. PPC finish metal cladding panel
- 28. anodised metal coping
- 29. anodised metal solid opening vent with external metal screening
- 30. reconstituted stone coping
- 31. double glazed anodised metal framed full height shop front glazing
- 32. zinc cladding panels with 20% anodised metal framed window unit inset
- 33. anodised metal door
- 34. painted galvanised metal screen
- 35. stainless steel metal gates
- 36. anodised metal framed projecting windows
- 37. zinc cladding panel
- 38. painted metal balustrade
- 39. remotely controlled, motorised folding painted metal shutter doors
- 40. PPC finish metal louvre

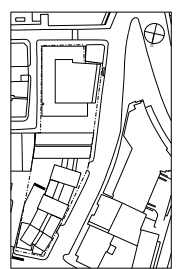
notes: all glazing to be double glazed, toughened and laminated units with low-e coating.



scale at A1 scale at A3  
 1:100 1:200  
 RS RS  
 09/08 09/08  
 lbd no. drawing rev.  
 0761 N PA180 A

proposed north block  
 east elevation (2 of 2)  
 drawing title  
 architect  
**Litschutz Davidson Sandilands**  
 Head Office  
 225 St. James's Square  
 London W1K 3NW  
 T +44 (0)20 8600 4800  
 F +44 (0)20 8600 4700  
 info@lids.com

client  
**Rocket Investments**  
 project  
 10 East Road, N1 | North Block



notes  
 1:10 scale drawing of building facade. The building is shown in relation to other structures on the site. The drawing is a key plan showing the location of the building on a site. It includes a north arrow and a scale of 1:100. The building is shown in relation to other structures on the site, including a 'student courtyard' and 'student accommodation'.

revisions  
 elevation base of tower revised  
 parapet height updated  
 general drawing revised  
 date rev  
 11.11.08 A