

legend

- 01a. facing brickwork type 1
- 01b. facing brickwork type 2
- 01c. facing brickwork type 3
- 01d. facing brickwork type 4
- 01e. facing brickwork type 5
- 02a. recessed brickwork panel type 1
- 02b. recessed brickwork panel type 2
- 02c. recessed brickwork panel type 3
- 02d. recessed brickwork panel type 4
- 03. anodised metal framed window unit
- 04. anodised metal framed window unit with opening casement
- 05. anodised metal framed window unit with opening casement and projecting reveal
- 06. anodised metal framed window unit with opening casement and projecting reveal/sill
- 07. anodised metal framed window unit with opening casement and projecting reveal/head
- 08. anodised metal framed glazed automatic opening vent
- 09. glazed spandrel panel
- 10. full height double glazed anodised metal framed unit
- 11. insulated metal cladding, anodised finish
- 12. anodised metal framed projecting window bay
- 13. stainless steel framed projecting glazed bay
- 14. glazed door
- 15. PPC metal door
- 16. anodised plant screen vertical louvres

parapet inset
▽ + 69.005m AOD

lift over run
▽ + 70.355m AOD

student 16th floor
▽ FFL + 65.820m AOD

student 15th floor
▽ FFL + 62.970m AOD

student 14th floor
▽ FFL + 60.120m AOD

student 13th floor
▽ FFL + 57.270m AOD

student 12th floor
▽ FFL + 54.420m AOD

student 11th floor
▽ FFL + 51.570m AOD

student 10th floor
▽ FFL + 48.720m AOD

student 9th floor
▽ FFL + 45.870m AOD

student 8th floor
▽ FFL + 43.020m AOD

student 7th floor
▽ FFL + 40.170m AOD

student 6th floor
▽ FFL + 37.320m AOD

student 5th floor
▽ FFL + 34.470m AOD

student 4th floor
▽ FFL + 31.620m AOD

student 3rd floor
▽ FFL + 28.770m AOD

student 2nd floor
▽ FFL + 25.920m AOD

student 1st floor
▽ FFL + 23.070m AOD

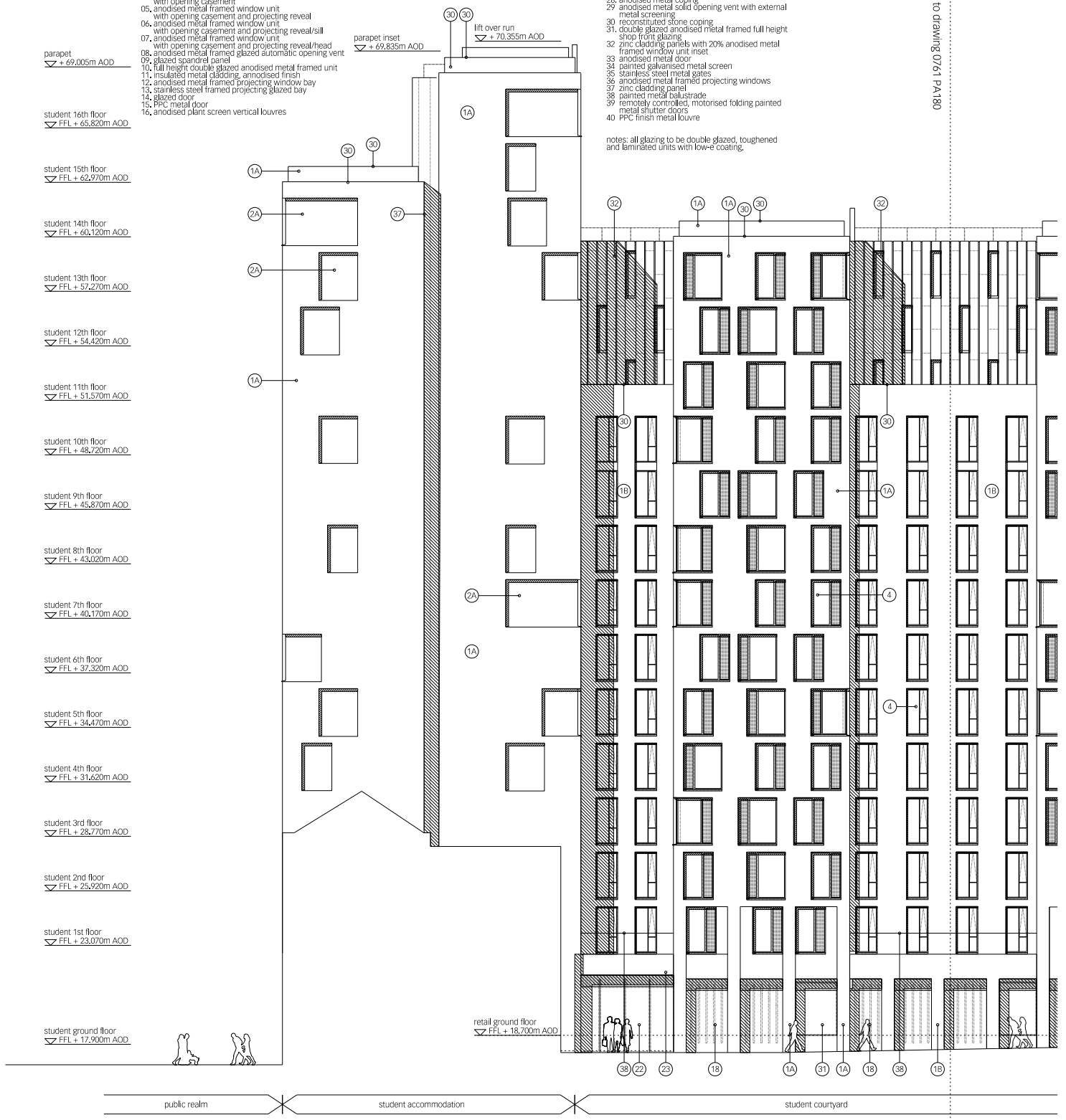
student ground floor
▽ FFL + 17.900m AOD

retail ground floor
▽ FFL + 18.700m AOD

- 17. precast concrete cladding panel
- 18. granite stone cladding
- 19. anodised metal cladding panel
- 20. insulated soffit with anodised metal panel
- 21. frameless full height glazing
- 22. glazed automatic sliding doors
- 23. anodised metal louvre
- 24. anodised metal panel
- 25. anodised projecting fin
- 26. glass balustrade
- 27. PPC finish metal cladding panel
- 28. anodised metal coping
- 29. anodised metal solid opening vent with external metal screening
- 30. reconstituted stone coping
- 31. double glazed anodised metal framed full height shop front glazing
- 32. zinc cladding panels with 20% anodised metal framed window unit inset
- 33. anodised metal door
- 34. painted galvanised metal screen
- 35. stainless steel metal gates
- 36. anodised metal framed projecting windows
- 37. zinc cladding panel
- 38. painted metal balustrade
- 39. remotely controlled, motorised folding painted metal shutter doors
- 40. PPC finish metal louvre

notes: all glazing to be double glazed, toughened and laminated units with low-e coating.

for continuation refer to drawing 07/61 PA180



drawing title
proposed north block east elevation (1 of 2)

scale at A1 1:100
scale at A3 1:200
drawn RS
date 09/08

job no. 07/61 N
drawing PA179
rev. A

architect
**Lifschutz
Davidson
Sandilands**
Head Office
28 St. Mark's Square
London W1K 5NW
T +44 (0)20 8800 8800
F +44 (0)20 8800 8700
info@lifsd.com

client
Rocket Investments

project
10 East Road, N1 | North Block



key plan

10 East Road, N1 | North Block

notes

revisions

date rev

11.11.08 A

general update
elevation update base of tower
window arrangement updated