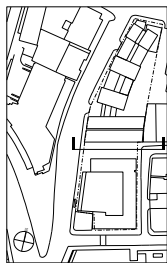


revisions	date	rev
window sizes amended	11.11.08 A	
parapet heights amended		
glazing heights amended		
fascia thickness adjusted at west elevation	03.12.08 B	

NOTES

This drawing is the property of Lifschutz Davidson Sandilands. No disclosure or copy of it may be made without the written permission of Lifschutz Davidson Sandilands.

key plan



project

10 East Road, N1 | North Block

client

Rocket Investments

architect

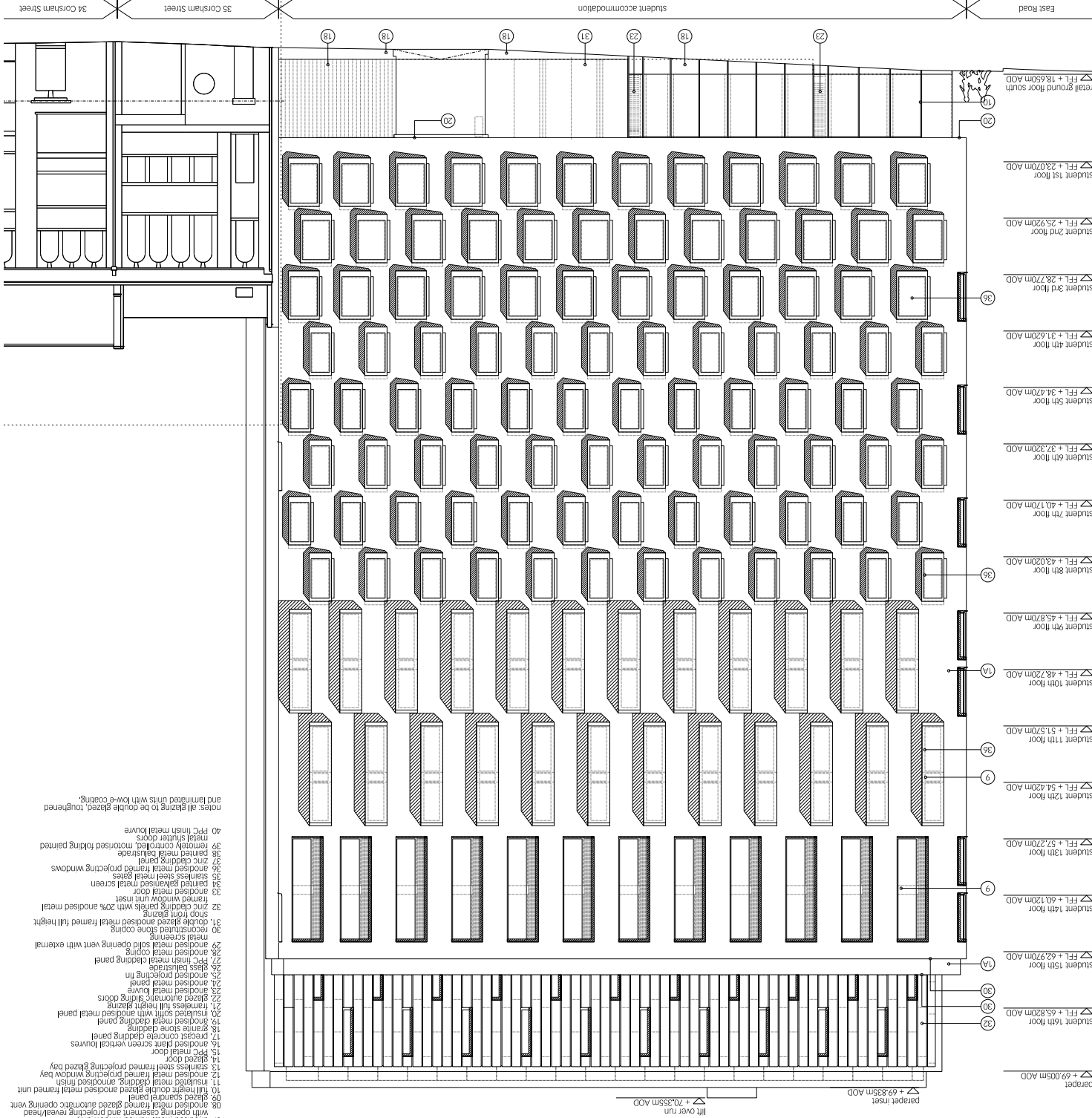
Lifschutz Davidson Sandilands

Lifschutz Studios
22 St. Peter's Square
London W6 5NW
T +44 (0)20 8600 8800
F +44 (0)20 8600 8700
mail@lds-uk.com

drawing title

proposed north block
south elevation

scale at A1	scale at A3	drawn	date
1:100	1:200	CP	09.08
job no.	drawing	rev.	
0761 N	PA178	B	



- notes: all glazing to be double glazed, toughened and laminated units with low-e coating.
- 01a, facing brickwork type 1
 - 01b, facing brickwork type 2
 - 01c, facing brickwork type 3
 - 01d, facing brickwork type 4
 - 01e, facing brickwork type 5
 - 02a, recessed brickwork panel type 1
 - 02b, recessed brickwork panel type 2
 - 02c, recessed brickwork panel type 3
 - 02d, recessed brickwork panel type 4
 - 03, anodised metal framed window unit
 - 04, anodised metal framed window unit with opening casement
 - 05, anodised metal framed window unit with opening casement and projecting reveals/ill
 - 06, anodised metal framed window unit with opening casement and projecting reveals/ill
 - 07, anodised metal framed window unit with opening casement and projecting reveals/ill
 - 08, anodised metal framed automatic opening vent
 - 09, glazed square panel
 - 10, full height double glazed anodised metal unit
 - 11, framed metal glazing anodised metal unit
 - 12, anodised metal projecting window bay
 - 13, stainless steel framed projecting glazed bay
 - 14, glazed door
 - 15, anodised plant screen vertical louvers
 - 16, anodised plant screen vertical louvers
 - 17, granite stone cladding
 - 18, anodised metal cladding panel
 - 19, stainless steel cladding panel
 - 20, stainless steel cladding panel
 - 21, stainless steel cladding panel
 - 22, glazed automatic sliding doors
 - 23, anodised metal louvre
 - 24, anodised metal louvre
 - 25, glass balustrade
 - 26, anodised metal cladding panel
 - 27, ppc finish metal cladding panel
 - 28, anodised metal coping
 - 29, anodised metal coping
 - 30, anodised metal coping
 - 31, double glazed anodised metal framed full height shop front glazing
 - 32, zinc cladding panels with 20% anodised metal framed window unit inset
 - 33, anodised metal door
 - 34, anodised metal door
 - 35, stainless steel metal screen
 - 36, anodised metal screen
 - 37, zinc cladding panel
 - 38, anodised metal framed projecting windows
 - 39, zinc cladding panel
 - 40, ppc finish metal louvre
 - 41, metal shutter doors
 - 42, anodised metal louvre