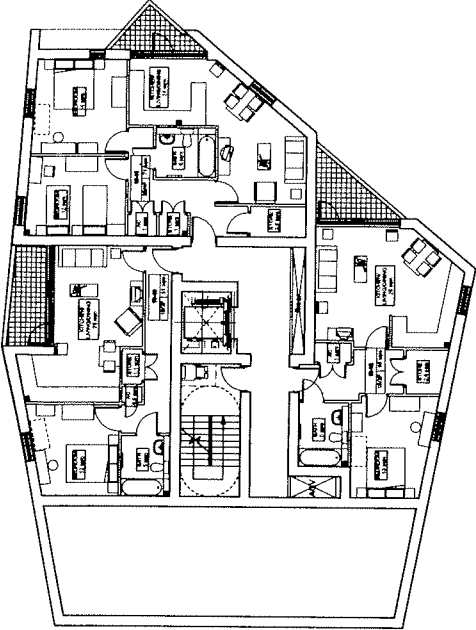


Room No.	Room Name	Area (sq. m)	Area (sq. ft)
1	RECEPTION	10.0	107.6
2	OFFICE	15.0	162.3
3	OFFICE	15.0	162.3
4	OFFICE	15.0	162.3
5	OFFICE	15.0	162.3
6	OFFICE	15.0	162.3
7	OFFICE	15.0	162.3
8	OFFICE	15.0	162.3
9	OFFICE	15.0	162.3
10	OFFICE	15.0	162.3
11	OFFICE	15.0	162.3
12	OFFICE	15.0	162.3
13	OFFICE	15.0	162.3
14	OFFICE	15.0	162.3
15	OFFICE	15.0	162.3
16	OFFICE	15.0	162.3
17	OFFICE	15.0	162.3
18	OFFICE	15.0	162.3
19	OFFICE	15.0	162.3
20	OFFICE	15.0	162.3
21	OFFICE	15.0	162.3
22	OFFICE	15.0	162.3
23	OFFICE	15.0	162.3
24	OFFICE	15.0	162.3
25	OFFICE	15.0	162.3
26	OFFICE	15.0	162.3
27	OFFICE	15.0	162.3
28	OFFICE	15.0	162.3
29	OFFICE	15.0	162.3
30	OFFICE	15.0	162.3
31	OFFICE	15.0	162.3
32	OFFICE	15.0	162.3
33	OFFICE	15.0	162.3
34	OFFICE	15.0	162.3
35	OFFICE	15.0	162.3
36	OFFICE	15.0	162.3
37	OFFICE	15.0	162.3
38	OFFICE	15.0	162.3
39	OFFICE	15.0	162.3
40	OFFICE	15.0	162.3
41	OFFICE	15.0	162.3
42	OFFICE	15.0	162.3
43	OFFICE	15.0	162.3
44	OFFICE	15.0	162.3
45	OFFICE	15.0	162.3
46	OFFICE	15.0	162.3
47	OFFICE	15.0	162.3
48	OFFICE	15.0	162.3
49	OFFICE	15.0	162.3
50	OFFICE	15.0	162.3
51	OFFICE	15.0	162.3
52	OFFICE	15.0	162.3
53	OFFICE	15.0	162.3
54	OFFICE	15.0	162.3
55	OFFICE	15.0	162.3
56	OFFICE	15.0	162.3
57	OFFICE	15.0	162.3
58	OFFICE	15.0	162.3
59	OFFICE	15.0	162.3
60	OFFICE	15.0	162.3
61	OFFICE	15.0	162.3
62	OFFICE	15.0	162.3
63	OFFICE	15.0	162.3
64	OFFICE	15.0	162.3
65	OFFICE	15.0	162.3
66	OFFICE	15.0	162.3
67	OFFICE	15.0	162.3
68	OFFICE	15.0	162.3
69	OFFICE	15.0	162.3
70	OFFICE	15.0	162.3
71	OFFICE	15.0	162.3
72	OFFICE	15.0	162.3
73	OFFICE	15.0	162.3
74	OFFICE	15.0	162.3
75	OFFICE	15.0	162.3
76	OFFICE	15.0	162.3
77	OFFICE	15.0	162.3
78	OFFICE	15.0	162.3
79	OFFICE	15.0	162.3
80	OFFICE	15.0	162.3
81	OFFICE	15.0	162.3
82	OFFICE	15.0	162.3
83	OFFICE	15.0	162.3
84	OFFICE	15.0	162.3
85	OFFICE	15.0	162.3
86	OFFICE	15.0	162.3
87	OFFICE	15.0	162.3
88	OFFICE	15.0	162.3
89	OFFICE	15.0	162.3
90	OFFICE	15.0	162.3
91	OFFICE	15.0	162.3
92	OFFICE	15.0	162.3
93	OFFICE	15.0	162.3
94	OFFICE	15.0	162.3
95	OFFICE	15.0	162.3
96	OFFICE	15.0	162.3
97	OFFICE	15.0	162.3
98	OFFICE	15.0	162.3
99	OFFICE	15.0	162.3
100	OFFICE	15.0	162.3



Turnfield Properties Ltd.

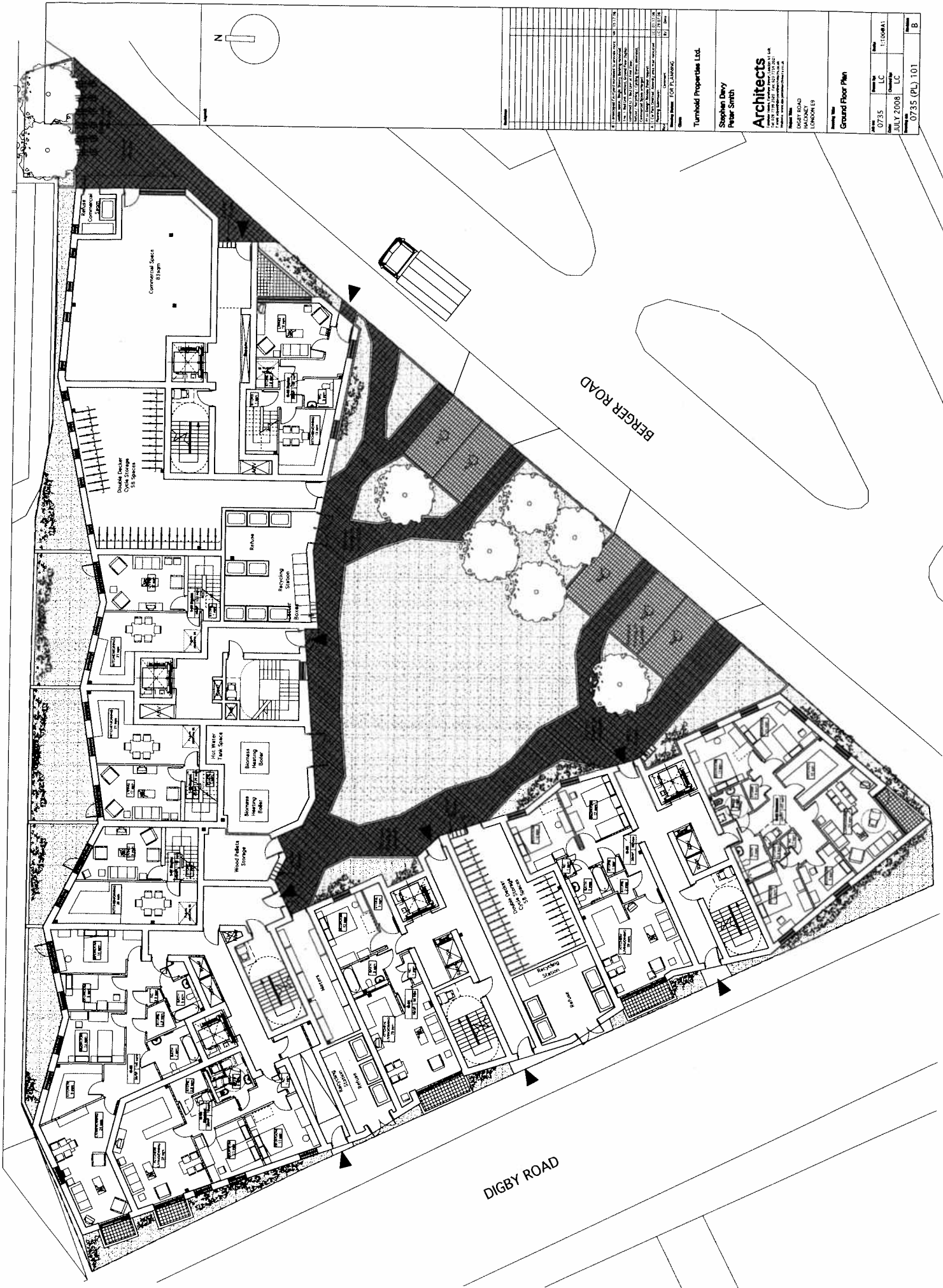
Stephen Dery
Peter Smith

Architects

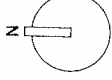
DEERY ROAD
HOONBY
SUNDERLAND

Through Floor Plan

Project No.	0735	Client	LC	Scale	1:1000(A1)
Date	JULY 2008	Checked by	LC		
Drawn by	0735 (PL) 114	Number			A

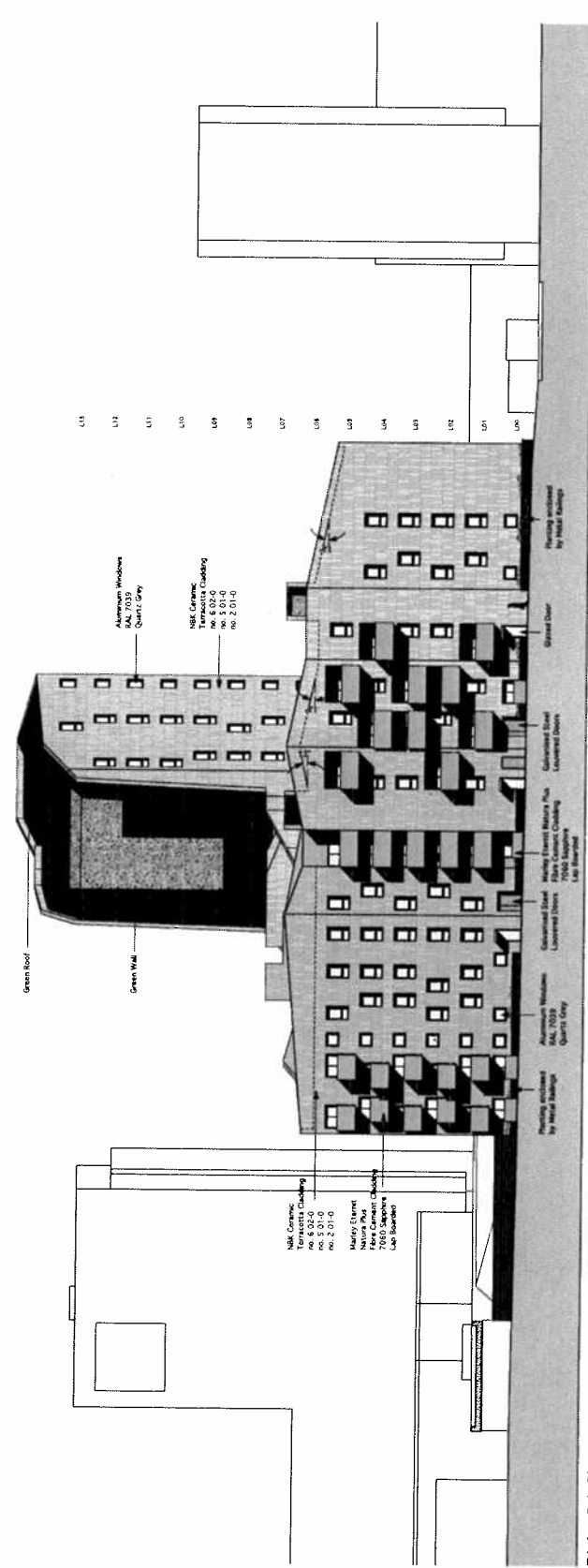


<p>Client: Turnhold Properties Ltd.</p> <p>Architects: Stephen Dewy, Peter Smith</p> <p>Architects: Architects</p> <p>Address: 100 BERGER ROAD, HADSPY, LONDON E9</p> <p>Project Name: Ground Floor Plan</p>	
<p>Date: 07/2008</p> <p>Scale: 1:1000</p> <p>Author: LC</p> <p>Checked: LC</p> <p>Project No: 0735 (PL) 101</p>	<p>Revision No: 1</p> <p>Revision Description: Initial Design</p> <p>Revision Date: 07/2008</p> <p>Revision By: LC</p>
<p>Revision No: 2</p> <p>Revision Description: Final Design</p> <p>Revision Date: 07/2008</p> <p>Revision By: LC</p>	<p>Revision No: 3</p> <p>Revision Description: Final Design</p> <p>Revision Date: 07/2008</p> <p>Revision By: LC</p>

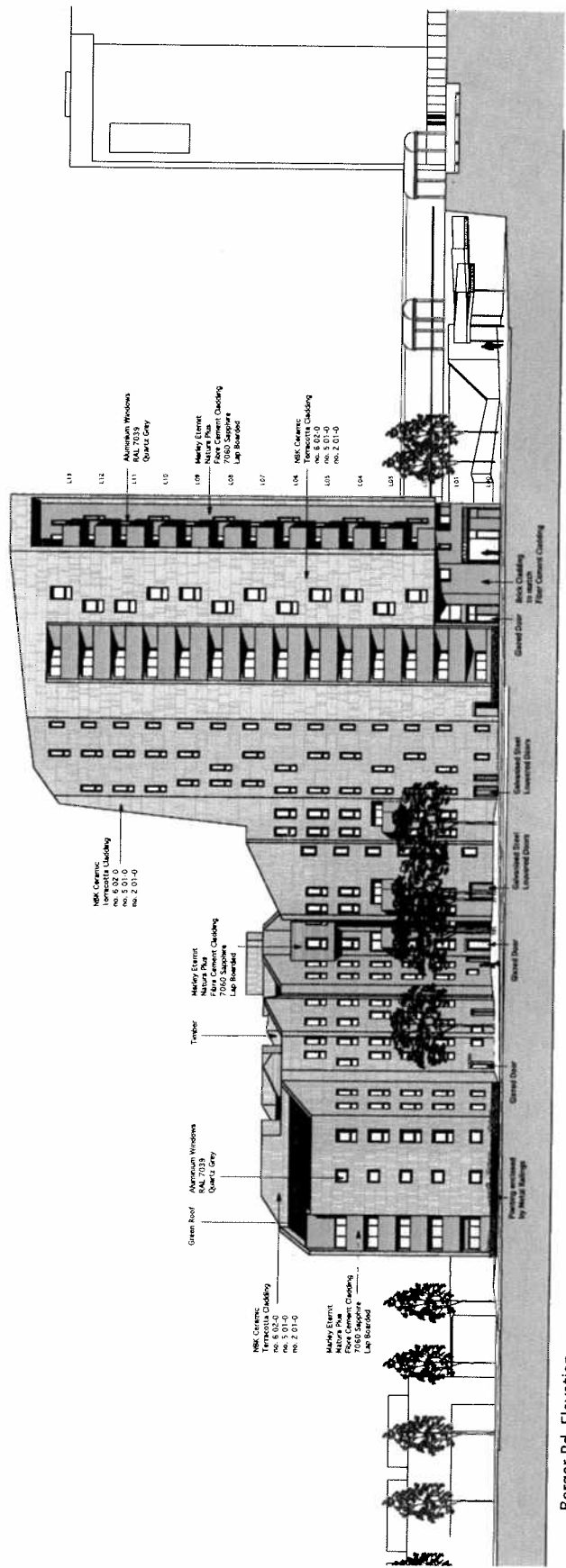
	
<p>Architects Stephen Day / Peter Smith 2, Church Street, London EC4A 3DF Tel: 020 7613 2300 Fax: 020 7613 2301 Email: info@sdayps.com</p>	
<p>Client Turnhold Properties Ltd.</p>	
<p>Project Name S10, S11, S12, S13, S14, S15, S16, S17, S18, S19, S20, S21, S22, S23, S24, S25, S26, S27, S28, S29, S30, S31, S32, S33, S34, S35, S36, S37, S38, S39, S40, S41, S42, S43, S44, S45, S46, S47, S48, S49, S50, S51, S52, S53, S54, S55, S56, S57, S58, S59, S60, S61, S62, S63, S64, S65, S66, S67, S68, S69, S70, S71, S72, S73, S74, S75, S76, S77, S78, S79, S80, S81, S82, S83, S84, S85, S86, S87, S88, S89, S90, S91, S92, S93, S94, S95, S96, S97, S98, S99, S100</p>	
<p>Site No 0735</p>	
<p>Scale 1:200 @ A1</p>	
<p>Date DEC 2008</p>	
<p>Project No 0735 (PL) 120</p>	



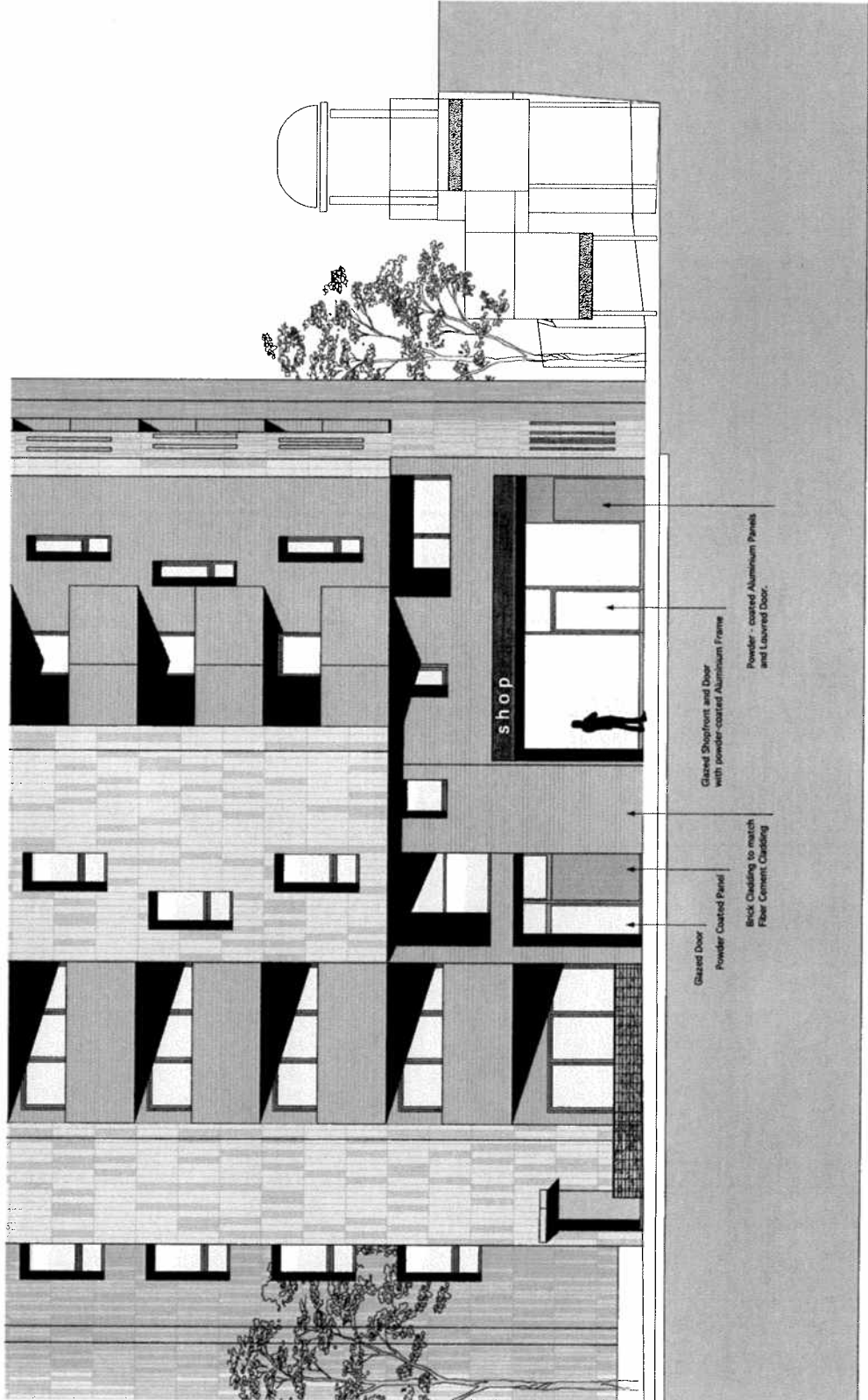
Drawing Name: ECF PLANNING		Scale: 1:500	Date: 16/11/2008
Author: [Name]	Checked: [Name]	Approved: [Name]	Project No: 0735
Client: Turnbold Properties Ltd.		Project Name: [Name]	
Architects: Stephen Davy, Peter Smith		Address: [Address]	
Architects: [Name]		Address: [Address]	
Project No: 0735		Date: JULY 2008	
Drawing No: 0735 (PL) 301		Sheet: A	



Digby Rd. Elevation



Berger Rd. Elevation



Glassed Door
Powder Coated Panel

Brick Chasing to match
First Floor Concrete Cladding

Glassed Shopfront and Door
with powder-coated Aluminium Frame

Powder-coated Aluminium Panels
and Louvered Door.

<p>Client: Turnhold Properties Ltd.</p> <p>Architects: Stephen Davy, Peter Smith Architects</p> <p>Project Name: 0735 Date: NOV 2008 Drawing No: 0735 (PL) 330</p>		<p>Scale: 1:50</p> <p>Sheet: 1 of 1</p>
<p>Project Location: DREY ROAD, HACKNEY, LONDON E5</p>		
<p>Project Title: GROUND FLOOR ENTRANCE EAST ELEVATION</p>		
<p>Date: 0735</p> <p>Client: LC</p> <p>Drawing No: LC</p>	<p>Date: 15.09.04</p>	<p>Sheet: A</p>