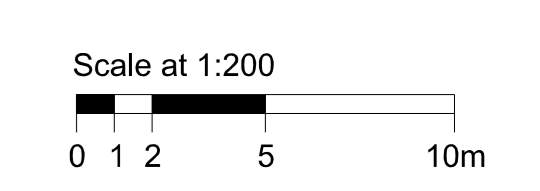
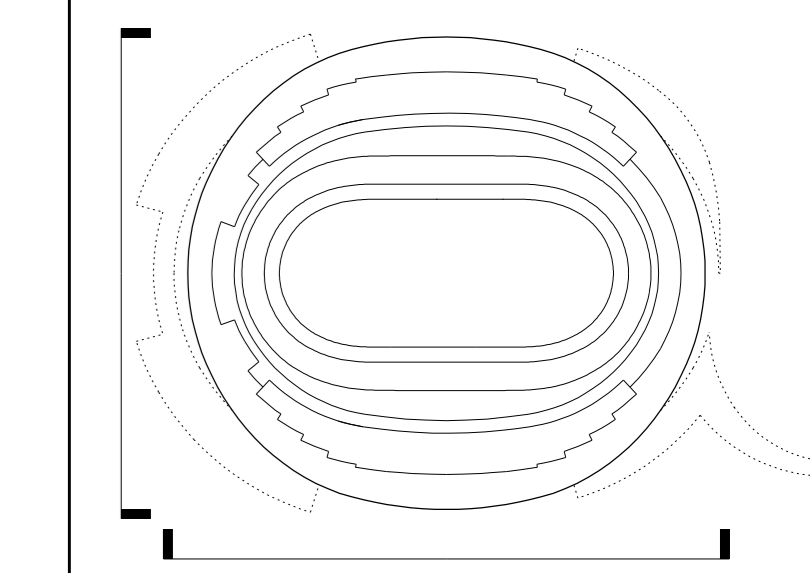


Copyright: Olympic Delivery Authority (ODA), 2007. All rights reserved. Except as permitted by the Copyright Designs and Patents Act 1988, no part of this document may be reproduced, stored, or transmitted in any form or by any means, electronic, mechanical, photocopying, recording, or otherwise, without the prior written permission of the ODA. The ODA shall have no liability for any loss or damage, or for any consequences arising from the use of the information contained in this document, whether in whole or in part, or for any loss or damage, or for any consequences arising from the use of the information contained in it.

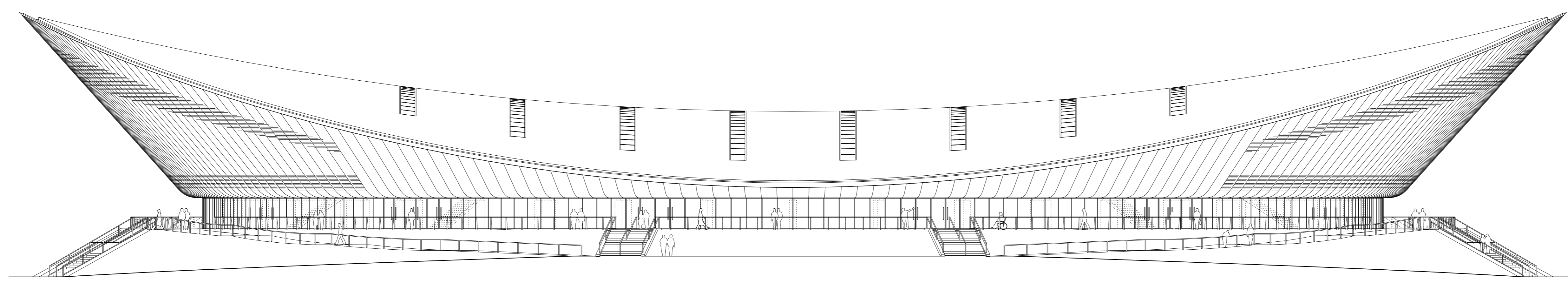
Do not scale this drawing.
Notes:



LANDSCAPE SHOWN FOR CONTEXTUAL PURPOSES ONLY - NOT FOR APPROVAL.
USE OF THE ROOMS, THE FURNITURE, AND SEATING LAYOUTS SHOWN FOR CONTEXTUAL PURPOSES ONLY - NOT FOR APPROVAL.

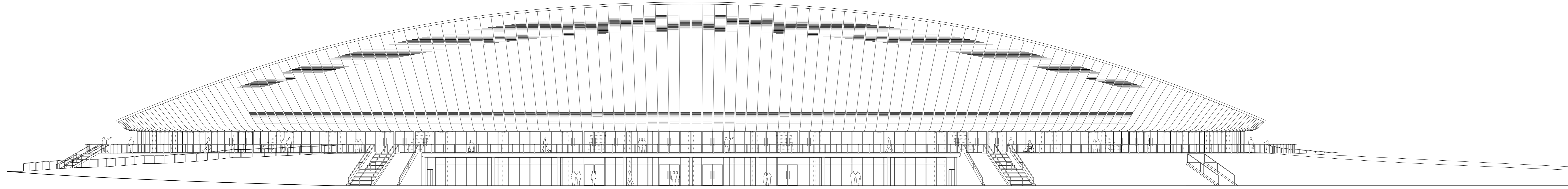


*1550 US Bow
*1700 Concourse Level
*1800 Ground Level



WEST ELEVATION

*1550 US Bow
*1700 Concourses Level
*1800 Ground Level



SOUTH ELEVATION

04	Planning Application	-	-	12/08/2008
Rev	Description	Drawn	CHK'd	Date
	Safety, Health and Environment Information			
In addition to the hazards / risks normally associated with the types of work detailed on this drawing, note the following risks and information:				
Construction	Cl			
	Cr			
Dismantling / Demolition (Future)	Df			
	Dh			
	Dm			
For information relating to Use, Cleaning and Maintenance see the Health and Safety File. But all works will be carried out by a competent contractor working, where appropriate, to an approved method statement.				
Creator	Prepared by Hopkins Architects On behalf of the ODA			
Project Title	Velodrome			
Drawing Title	VELODROME LEGACY SOUTH & WEST ELEVATIONS			
Drawn	Checked	Approved		
Scale (A3)	1:200	Date	08/09/2008	Status
Purpose of Drawing	Planning Application	Rev.	04	Yrs. S2
Drawing No.	VEL-HAL-6-ELE-DR-A-6-D56-0400			
Document Identification:	Contract No.	Project	Area	Disc. Category
	1007	VEL	ELE	A DEL 0400

FOR APPROVAL

FILENAME: FILENAME PLOT DATE: PLOT DATE PLOT TIME: PLOT TIME